

APPLICATIONS

The PARALUME® III series of static and air handling troffers are designed for individual or continuous row installations in data processing areas, offices, schools, stores and libraries. The deep cell anodized aluminum louver eliminates glare and ceiling reflections when used in task situations.



SPECIFICATIONS

HOUSING: Die formed of 20 ga. cold rolled steel, rigidly fabricated, and electrically welded to insure true and perfect alignment.

SOCKET PLATE: Die formed of code gauge cold rolled steel, securely mounted and readily removable for socket maintenance.

REFLECTOR: Die formed of code gauge cold rolled steel, securely mounted to housing. Formed to optically correct contour to provide maximum efficiency, removable to access wiring without the use of tools. XTA-XTRALUME® energy efficient reflector available (see OPTIONS).

LOUVER: Large cell parabolic louver fabricated from semi-specular anodized low iridescence aluminum. Blades are precisely formed and rigidly assembled to maintain parabolic contour and assure proper surface brightness control. The louver assembly hinges from either side allowing access to the interior without the use of tools and floats within the housing in a fully bordered matte black reveal.

ELECTRICAL: Thermally protected Class "P" Energy Saving Instant Start HPF 265MA-T8, 270MA-Biax (Twin Tube) electronic ballasts standard for 118V 60 Hz operation. Other voltages and frequencies available, consult factory.

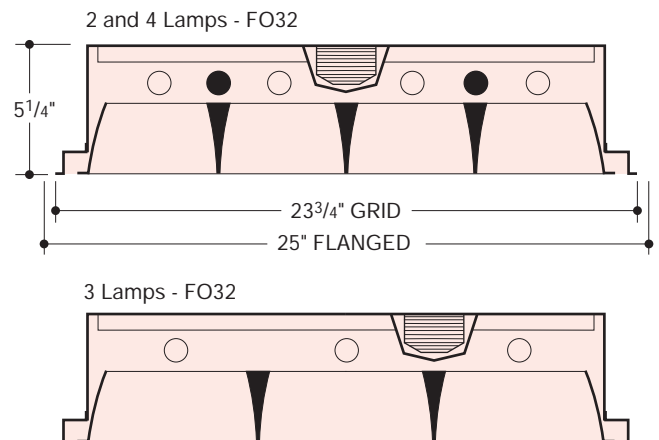
MOUNTING: Designed to integrate into most standard ceilings. Quick Mount leveling jacks are supplied on concealed mechanical units only. For grid type ceilings, unit rests on the flanges of the exposed spline or tee. Fine Line clips are supplied on units used in Donn-Fine Line type ceilings. See ceilings and specify type. Knockouts provided on back and ends for feed and thru-wiring.

AIR HANDLING: Designed to perform as a static, air supply or air return unit, (see AIR HANDLING function). Compatible with all major air supply diffusers (supplied by others).

FINISH: All steel components parts are completely protected against rust and discoloration after fabrication through an automated conveyorized multi-stage phosphate bonding process. Finished with an electrostatic baked white polyester thermosetting powder coating. This electronic computer controlled integrated system assures consistent 88%+ reflectance efficiency and maximum durability.

CERTIFICATION: The PARALUME® III is U.L. and C.U.L. listed and bears the label of the I.B.E.W./AFL-CIO, Local #3. Optionally U.L. and C.U.L. listed for damp locations "DL".

PARALUME®, XTRALUME® and LEGION® are registered trademarks of LEGION LIGHTING CO., INC.



LOUVERS



• PB12/3
12 CELL



• PB18/3
18 CELL



• PB24/3
24 CELL



• PB27/3
27 CELL



• PB32/3
32 CELL

• Refer to OPTIONS on reverse side

1/04

ORDERING DATA

Catalog No.	No. and Type	Specify Ceiling	Louver No. of Cells	Wt.	Nom. Size
372-232-PB18/3	2-F032-OCT-T8	*F, J, S	18	38	2x4
372-232-PB32/3	2-F032-OCT-T8	*F, J, S	32	40	
372-332-PB18/3	3-F032-OCT-T8	*F, J, S	18	42	
372-332-PB32/3	3-F032-OCT-T8	*F, J, S	32	43	
372-432-PB18/3	4-F032-OCT-T8	*F, J, S	18	42	
372-432-PB32/3	4-F032-OCT-T8	*F, J, S	32	43	

- * Advise run lengths when used in continuous runs.
- Other louver cellular patterns available, see OPTIONS and consult factory. For 3x3 and 4x4 units, consult factory for availability.

OPTIONS

- Suffix "DIM" after catalog no. for dimming ballast.
- Suffix "LT" after catalog no. for cold weather ballast.
- Suffix "EM" after cat. no. for emergency battery pack, see price list for types.
- Suffix "DL" after catalog no. for damp location.
- Suffix "PB12/3" after catalog no. for 12 cell louver.
- Suffix "PB24/3" after catalog no. for 24 cell louver.
- Suffix "PB27/3" after catalog no. for 27 cell louver.
- Suffix "WH" after catalog no. for White finish on louver.
- Suffix "SSG" after catalog no. for Semi-Specular Gold finish on louver.
- Suffix "XTA" after catalog no. for XTRALUME® reflector standard with 85% reflectance, for 95% reflectance please specify your requirements.
- Consult factory for availability and minimum quantity order.

ENERGY SAVING BALLASTS Where applicable (consult factory). Suffix "ESB" after catalog number, then / and then one of the following:

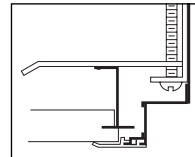
- MAGNETIC** "OCT"-Octron T8 Ballast
- ELECTRONIC** "EBO"-Electronic T8 Octron Ballast
- "EBDO"-Electronic T8 Dimming Ballast

SPECIFY AIR HANDLING FUNCTION (Suffix after catalog no.)

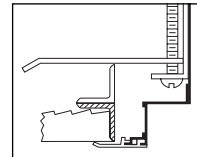
- AS - Air Supply/Return - slots in 2 sides, parallel to lamps.
- ST - Static - No slots.
- PC - For Air Pattern Control Blades.

CEILINGINGS

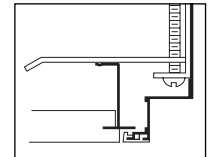
- + Type (F) Flanged, Wet plaster ceiling. (Requires plaster frame, optional) suffix PF.
 - + Type (F) Flanged, Concealed "Z" spline ceiling, Z splines must face outward from troffer.
 - + Type (F) Flanged, Metal pan 1" "T" bar only and Simplex Ceiling.
 - + Type (F) Flanged, Armstrong ATS - snap bar must run perpendicular to side of troffer - Mount on black iron.
 - ++ Type (J) Exposed inverted "T" ceiling.
 - ++ Type (J) Concealed inverted "T" ceiling.
 - ++ Type (J) Exposed inverted "T", Tegular ceiling.
 - ++ Type (J) Exposed inverted "T", Fineline ceiling. (Req's. Fineline clips) suffix FLC.
 - + Type (S) Flush, Wet plaster ceiling. (Requires plaster frame, optional) suffix PF.
 - + Type (S) Flush, Concealed "Z" spline ceiling, Z splines must face outward from troffer.
 - + Type (S) Metal pan 1" "T" bar only and Simplex ceiling.
- + (F) Flanged and (S) Flush troffers provided with Quick Mount leveling jacks.
 ++ (J) Exposed (J) Concealed troffers: The corners of the ceiling opening should be well supported to withstand the weight of the troffer.



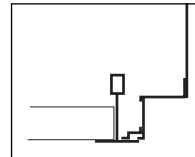
CONCEALED "Z" BAR Type "F" Flanged



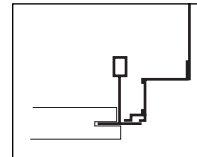
WET PLASTER Type "F" Flanged



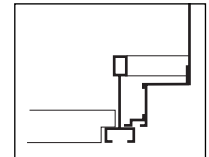
CONCEALED "Z" BAR Type "S" Slip-in flush trim



EXPOSED "T" BAR Type "J" Lay-in



CONCEALED "T" BAR Type "J" Lay-in

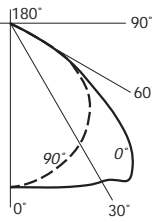


FINE LINE Type "J" Lay-in

PHOTOMETRIC DATA

Cat. No. 372-332-PB18/3
 9 Cell 3" deep Semi-Spec. Alum. Louver. Lamps: (3) FO32-OCT-T8 each rated 2900 lumens.

Total Luminaire Efficiency = 70.6%
 Plane 0-Deg. 90-Deg.
 Spacing Criteria 1.2 1.6
 Shielding Angles 29 41



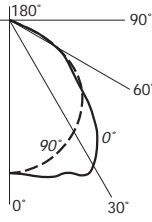
Zonal Lumen Summary			
Zone	Lumens	% Lamp	% Fixt.
0-30	2073	22.3	31.6
0-40	3563	38.3	54.3
0-60	6180	66.5	94.1
0-90	6565	70.6	100.0

Coefficients of Utilization - Zonal Cavity Method											
	Floor	80%						20%			
		70%	50%	30%	70%	50%	30%	70%	50%		
372-332-PB18/3	Ceiling										
	Walls										
	0	.84	.84	.84	.82	.82	.82	.78	.78	.78	
	1	.79	.76	.74	.77	.75	.73	.72	.70	.69	
	2	.73	.69	.65	.72	.68	.64	.65	.63	.60	
	3	.68	.62	.58	.67	.61	.57	.59	.56	.53	
	4	.63	.56	.51	.62	.55	.50	.53	.49	.46	
	5	.58	.50	.45	.57	.49	.44	.48	.43	.40	
	6	.53	.45	.39	.52	.44	.39	.43	.38	.35	
	7	.49	.40	.35	.48	.40	.34	.39	.34	.30	
372-432-PB32/3	0	.77	.77	.77	.75	.75	.75	.72	.72	.72	
	1	.73	.70	.68	.71	.69	.67	.66	.65	.63	
	2	.68	.64	.61	.66	.63	.60	.61	.58	.56	
	3	.63	.58	.54	.62	.57	.53	.55	.52	.49	
	4	.59	.52	.48	.57	.52	.47	.50	.46	.44	
	5	.54	.47	.43	.53	.47	.42	.45	.41	.38	
	6	.50	.43	.38	.49	.42	.37	.41	.37	.34	
	7	.46	.39	.33	.45	.38	.33	.37	.33	.30	
	8	.43	.35	.30	.42	.34	.29	.33	.29	.26	
	9	.39	.31	.26	.38	.31	.26	.30	.25	.22	
10	.36	.28	.23	.36	.28	.23	.27	.23	.20		

Visual Comfort Probability						
Average 100 FC, Reflectances 80/50/20						
	Room Size		0° Plane Ceiling Ht.		90° Plane Ceiling Ht.	
	W	L	8.5	10.0	8.5	10.0
372-332-PB18/3	20	20	77	70	85	79
	30	30	83	78	90	85
	30	60	86	82	90	85
	60	30	84	80	90	87
372-432-PB32/3	60	60	88	84	90	88
	20	20	82	73	89	78
	30	30	98	81	92	85
	30	60	89	83	92	86
372-432-PB32/3	60	30	88	81	92	85
	60	60	88	83	92	86

Cat. No. 372-432-PB32/3
 9 Cell 3" deep Semi-Spec. Alum. Louver. Lamps: (4) FO32-OCT-T8 each rated 2900 lumens.

Total Luminaire Efficiency = 64.8%
 Plane 0-Deg. 90-Deg.
 Spacing Criteria 1.2 1.3
 Shielding Angles 28 46



Zonal Lumen Summary			
Zone	Lumens	% Lamp	% Fixt.
0-30	2870	23.1	35.7
0-40	4763	38.4	59.2
0-60	7750	62.5	96.4
0-90	8041	64.8	100.0

Average Luminance (Footlamberts)		
	Vertical Angle	Horizontal Plane
		0° 90°
372-332-PB18/3	45	1048 1488
	55	934 732
	65	590 129
	75	76 29
372-432-PB32/3	85	38 11
	45	1420 1383
	55	1211 1216
	65	358 104
372-432-PB32/3	75	51 36
	85	16 16

Information supplied primarily for illustrative purposes, subject to change. Consult factory for verification and minimum quantity orders. Photometrics and/or performance summaries for your particular layout available, consult factory.

