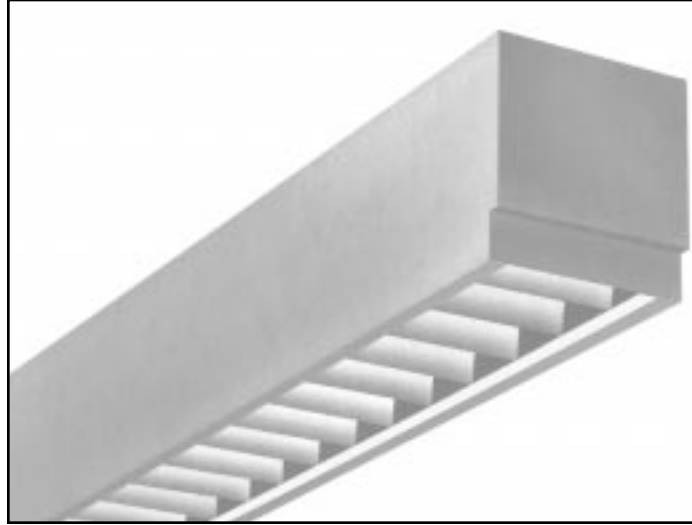


APPLICATIONS

Whether you require straight runs, patterns, or perimeter lighting, the MOD-U-BEAM® recessed series will work for you. Available in either one or two-lamp configurations and modular lengths, the MOD-U-BEAM® recessed series complements an environment unobtrusively yet still permits you to make an attractive visual statement. A variety of shielding media and options gives you exactly the look you want. For lighting that's contemporary, energy efficient and versatile, specify the MOD-U-BEAM® recessed series from LEGION LIGHTING.



SPECIFICATIONS

CONSTRUCTION: Die formed of 20 ga. cold rolled prime steel, rigidly fabricated, and electrically welded to insure true and perfect alignment.

SOCKET PLATES: Die formed of code ga. steel and mounted securely to fixture housing and readily removable for socket maintenance. (Adjustable for 7 1/2" or 12 1/2" beam offset - wall wash lens, one lamp units only).

REFLECTOR: Die formed of code ga. steel and mounted securely to fixture housing. Formed to optically correct contour to provide maximum efficiency. XTA-XTRALUME® energy efficient reflector available (see OPTIONS).

DIFFUSER: Tip-Tilt diffuser for removal, relamping and servicing. Refer to Shielding Media for types available.

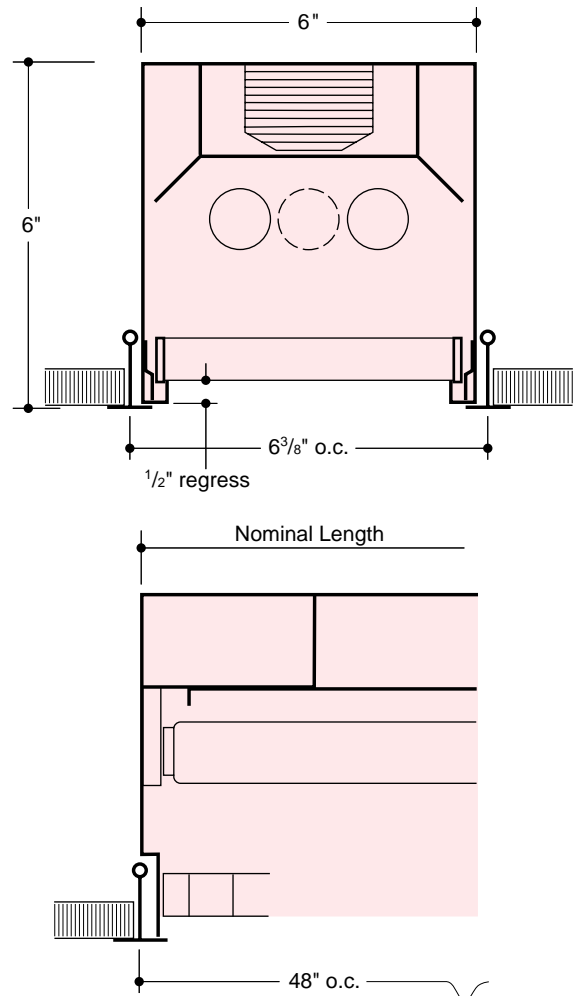
ELECTRICAL: Thermally protected class "P" Energy Saving Rapid / Instant Start HPF 265MA-T8 electronic ballasts. 430MA Rapid Start HPF, Trigger Start LPF, and 425MA Slimline HPF-T12 magnetic ballasts for 118V 60 Hz operation standard. Other electronic ballasts, voltages and frequencies available, consult factory. (See OPTIONS).

MOUNTING: For grid type ceilings, the troffer rests on the flanges of exposed spline or tee, in exposed spline ceilings, the "z" splines must face outward from the troffer. The troffer opening should be well supported to withstand the weight of the troffer. Suggest additional support of troffer by means of threaded rods and kindorf channel (by others) thru top of troffer on centerline to slab, or as installing contractor sees fit based on job conditions. Installation must be coordinated between installing contractor and ceiling contractor. Adequate knockouts are provided on back for mounting and feeding and on ends for thru wiring and joining in rows. Advise factory when using in Finline type ceilings.

CEILING OPENING to be 6 3/8" wide from centerline to centerline of T-bars or z splines. The "z" splines must face outward from the troffer.

FINISH: All steel component parts are completely protected against rust and discoloration after fabrication through an automated conveyerized multi-stage phosphate bonding process. Finished with an electrostatic baked white polyester thermosetting powder coating. This electronic computer controlled integrated system assures consistent 88%+ reflectance efficiency and maximum durability.

CERTIFICATION: The Mod-U-Beam® Series JR607 luminaire is U.L. and C.U.L. listed and bears the label of the I.B.E.W./AFL-CIO, Local #3.



ORDERING DATA

Catalog No.	No. and Type Lamps	Width	Length
JR607-117 EBO	1-FO17-OCT-T8	6"	24"
JR607-217 EBO	2-FO17-OCT-T8		
JR607-125 EBO	1-FO25-OCT-T8	6"	36"
JR607-225 EBO	2-FO25-OCT-T8		
JR607-132 EBO	1-FO32-OCT-T8	6"	48"
JR607-232 EBO	2-FO32-OCT-T8		
JR607-160 EBO	1-FO40-OCT-T8	6"	60"
JR607-260 EBO	2-FO40-OCT-T8		
JR607-125-6T EBO	2-FO25-OCT-T8	6"	72"
JR607-225-6T EBO	4-FO25-OCT-T8		
JR607-132-8T EBO	2-FO32-OCT-T8	6"	96"
JR607-232-8T EBO	4-FO32-OCT-T8		
JR607-196SL EBO	1-FO96-OCT-T8	6"	96"
JR607-296SL EBO	2-FO96-OCT-T8		
JR607-196-16TSL EBO	2-FO96-OCT-T8	6"	*192"

ALL UNITS ARE AVAILABLE FOR T5 LAMPS - CONSULT FACTORY WITH WATTAGE REQUIREMENTS.

UNITS FOR BIAx LAMPS - CONSULT FACTORY.

EXTENSION BOXES: For Corner Box, Extensions, Fillers and Angles, CONSULT FACTORY.

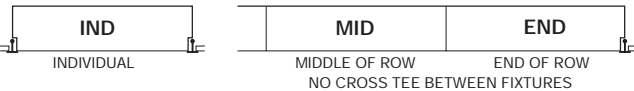
* Housing supplied in two equal sections, coupled together in field by installing contractor.

OCTRON™ is a registered trademark of SYLVANIA.

CEILING S - Specify Type:

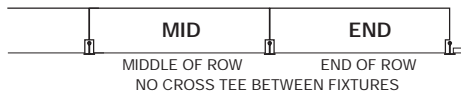
Type (J) Exposed/Concealed/Tegular, Inverted "T" ceilings.
 Type (J) Exposed Inverted "T", Fineline ceiling.
 Type (J) Exposed "Z" spline ceiling, Z splines must face outward from troffer.
NOTE: Troffer must be independently supported from the suspended ceiling (rod support or Kindorf channel - by others suggested).

3 Housing types for Individual or Continuous row mounting:



NOTE: All JR606 recessed grid units must be indicated with the following suffixes. Individual units — IND. Middle units — MID. End of row — END.

Continuous rows: Advise row lengths when specifying or ordering. Advise if cross tees are being used at ends or in-between fixtures



OPTIONS

Suffix "LT" after catalog no. for cold weather ballast.

Suffix "EM" after cat. no. for emerg. battery pack, see price list for types.

Suffix "DL" after catalog no. for damp location.

Suffix "XTA" after catalog no. for XTRALUME® reflector std. with 85% reflectance, for 95% reflectance please specify your requirements.

ENERGY SAVING BALLASTS Where applicable (consult factory).

Suffix "ESB" after catalog number, then / and one of the following:

ELECTRONIC

"EBO"-Electronic T8 Octron Ballast

"EBDO"-Electronic T8 Dimming Ballast

SHIELDING MEDIA

Type (LB) 3/4" x 3/4"-45° cutoff-lateral blade louver - white.

Type (PAB) 2" x 1 1/4"-35° cutoff-parabolic semi-spec. silver lateral blade louver.

Type (AL) 1/2" cube aluminum louver - white.

Type (PL) 1/2" cube styrene louver - white.

Type (PLA) 1/2" cube acrylic louver - white.

Type (BB) 1" x 1"-45° cutoff - bold baffle - lateral blade louver - white.

Type (AF) 3/4" cube angleflex - specular silver louver.

Type (PAFA) 5/8" cube Paraflex specular silver louver - acrylic.

Type (PWA) 1/2" cube Parawedge specular silver louver - acrylic.

Type (PAFIVA) 3/4" x 3/4" x 1/2" deep Paraflex specular silver louver - acrylic.

Type (PL3A) 3/4" x 3/4" x 1/2" deep high efficiency specular silver louver - acrylic.

Type (PL5A) 3/4" x 3/4" x 3/8" deep high efficiency specular silver louver - acrylic.

Type (RFA) acrylic plastic refractor.

Type (K19A) KSH K19 acrylic lens.

Type (FA) flat white acrylic.

Type (GRA) glass fiber reinforced acrylic.

• Type (H044) Holophane 6044 acrylic wall wash lens.

• Type (ASY) Plaskolite acrylic wall wash lens.

• Type (K3E) KSH asymmetric wall wash lens.

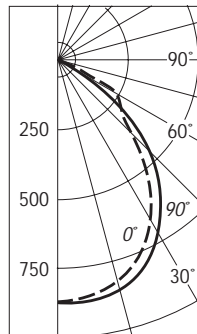
• Wall Wash adjustable socket plate supplied in 1-lamp units only. Not available in SL sizes.

CONSULT FACTORY FOR MINIMUM QUANTITY ORDERS.

PHOTOMETRIC DATA

Cat. No. **JR607**
 Type: (PAB) Louver
 Lamps: (1) FO32
 2900 Lumens

CANDLEPOWER DISTRIBUTION



COEFFICIENTS OF UTILIZATION*

Floor	20%									
	80%				50%					
Ceiling	80%	50%	30%	10%	50%	30%	10%	50%	30%	10%
Walls	70%	50%	30%	10%	50%	30%	10%	50%	30%	10%
RCR	ZONAL CAVITY METHOD									
1	.61	.59	.57	.56	.56	.54	.53	.53	.52	.51
2	.57	.51	.51	.48	.51	.48	.46	.49	.47	.45
3	.53	.48	.45	.42	.46	.43	.41	.45	.42	.40
4	.49	.44	.40	.37	.42	.39	.36	.41	.38	.36
5	.45	.40	.35	.32	.38	.35	.32	.37	.34	.32
6	.42	.36	.32	.29	.35	.31	.28	.34	.31	.28
7	.39	.33	.28	.26	.31	.28	.25	.31	.28	.25
8	.36	.30	.25	.23	.29	.25	.22	.28	.25	.22
9	.34	.27	.23	.20	.26	.22	.20	.25	.22	.20
10	.31	.24	.20	.18	.24	.20	.18	.23	.20	.17

*MULTIPLIERS

For Type (PW) Louver with:

- 1 lamp, multiply values by 0.66
- 2 lamps, multiply values by 0.35

For Type (PA) White Acrylic with:

- 1 lamp, multiply values by 0.78
- 2 lamps, multiply values by 0.66

For Type (RFA) Acrylic lens with:

- 1 lamp, multiply values by 1.07
- 2 lamps, multiply values by 0.90

For Type (BB) Bold Baffle with:

- 1 lamp, multiply values by 0.81
- 2 lamps, multiply values by 0.71

Information supplied primarily for illustrative purposes, subject to change. Consult factory for verification and minimum quantity orders.