

INSTRUCTIONS

BOTTOM CABLE FITTING

(IT IS ASSUMED THAT CABLE IS FASTENED TO ABOVE CEILING
AS PER INSTRUCTION SHEET IS0002, IS0002A OR IS0003)

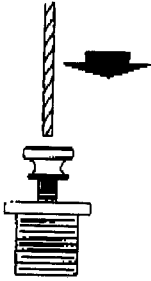
STEP 1



LOOSEN THUMB NUT ON FITTING BUT DO NOT REMOVE.

STEP 2

INSTALL FITTING ON CABLE BY PUSHING CABLE THROUGH TOP OF FITTING (IF CABLE DOES NOT SLIP THROUGH SMOOTHLY, THUMB NUT MAY HAVE TO BE LOOSENED FURTHER). FITTING WILL ONLY GO UP CABLE BECAUSE MECHANISM WILL ONLY PERMIT UPWARD MOVEMENT (FOR MOVING FITTING DOWNWARD, SEE STEP #3).

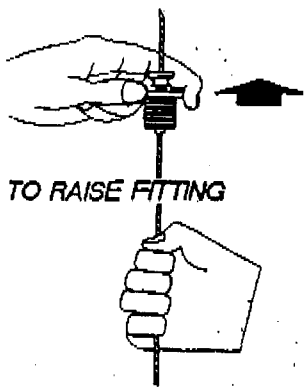


STEP 3

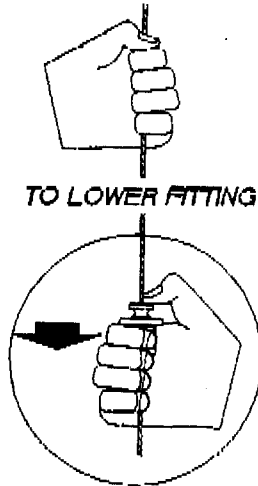
TO ADJUST HEIGHT OF FITTING, THUMB NUT MUST BE LOOSE, BUT NOT REMOVED. TO MOVE FITTING UPWARD, GRASP BOTTOM OF CABLE AND PULL FITTING UP TO DESIRED HEIGHT. TO LOWER FITTING, PUSH AND HOLD THUMB NUT DOWN AGAINST FITTING BODY (SOME RESISTANCE WILL BE FELT BECAUSE OF SPRING IN MECHANISM), AND LOWER FITTING INTO POSITION.

STEP 4

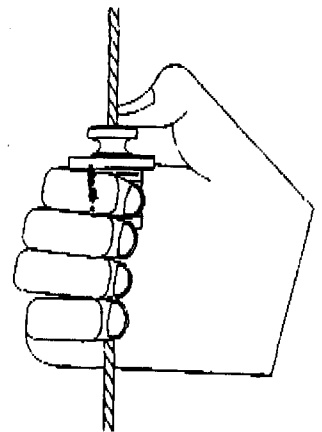
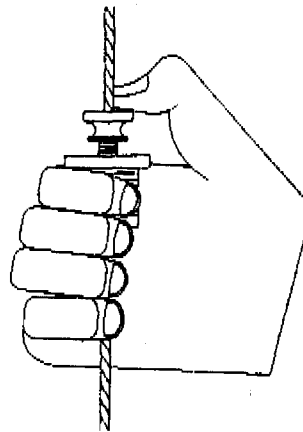
TO LOCK FITTING INTO POSITION, TURN THUMB NUT UNTIL IT SITS ON FITTING BODY. FITTING CAN BE READJUSTED BY FOLLOWING STEP #3.



TO RAISE FITTING



TO LOWER FITTING

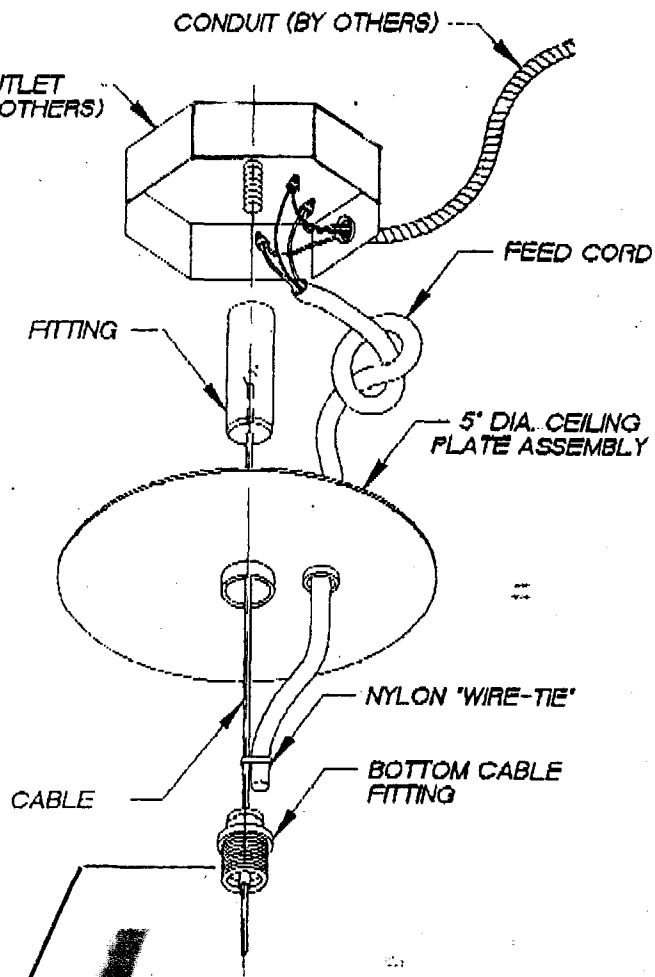


No. 130004

INSTALLATION INSTRUCTIONS

FEED CABLE ASSEMBLY (ALT.)

- STEP 1** 4" OCTAGONAL OUTLET BOX WITH 1/4-20 CENTER STUD TO BE RECESSED ABOVE CEILING LINE AND FASTENED TO ABOVE STRUCTURE (SEE LOCAL CODES). LOCATE PRECISLY WHERE SHOWN ON LAYOUT DRAWINGS.
- STEP 2** SPLICE FEED CORD CONDUCTORS TO INCOMING LINE AS REQUIRED. KNOT FEED CORD NEAR TOP TO ACT AS STRAIN RELIEF (OTHER MECHANICAL STRAIN RELIEFS AVAILABLE MAY ALSO BE USED). LET FREE END OF FEED CORD HANG DOWN.
- STEP 3** SLIP CABLE (END WITHOUT SWAGED BALL) THROUGH FITTING (END OPPOSITE CHAMFER) UNTIL BALL IS SEATED INSIDE FITTING. THREAD FITTING/CABLE ASSEMBLY ONTO 1/4-20 STUD OF OUTLET BOX.
- STEP 4** SLIP CABLE THROUGH CENTER HOLE OF CEILING PLATE ASSEMBLY AND FEED CORD THROUGH PLASTIC BUSHING IN CEILING PLATE. LIFT CEILING PLATE ASSEMBLY TO CEILING LINE. TIGHTEN SET SCREW IN SLIP RING AGAINST FITTING TO LOCK CEILING PLATE ASSEMBLY INTO PLACE.



OPTIONAL POWER FEED TUBE



FEED CORD

REFER TO FACTORY SUPPLIED LAYOUT DRAWINGS FOR ALL MOUNTING LOCATIONS

OPTIONAL POWER FEED TUBE CAN BE USED TO CREATE SIDE CORD HOLE WHEN HANGING FROM A SINGLE MOUNTING POINT. CORD HOLE IS CUT ON A DIAGONAL FOR EASY ENTRY OF FEED CORD. SUPPLIED STANDARD WITH ID2900 & ID2950

NO. IS0002A

INSTALLATION INSTRUCTIONS

CAHA - NON-FEED CABLE ASSEMBLY

STEP 1 ATTACH 1/4-20 ROD TO ABOVE STRUCTURE AS PER DETAIL 'A' (SEE LOCAL CODES). LOCATE PRECISELY WHERE SHOWN ON LAYOUT DRAWINGS.

STEP 2 SLIP CABLE (END WITHOUT SWAGED BALL) THROUGH FITTING (END OPPOSITE CHAMFER) UNTIL BALL IS SEATED INSIDE FITTING. TIGHTEN FITTING/CABLE ASSEMBLY ONTO 1/4-20 ROD.

STEP 3 SLIP CABLE THROUGH CENTER HOLE OF CEILING PLATE ASSEMBLY. LIFT CEILING PLATE ASSEMBLY TO CEILING LINE. TIGHTEN SET SCREW IN SLIP RING AGAINST FITTING TO LOCK CEILING PLATE ASSEMBLY INTO PLACE.

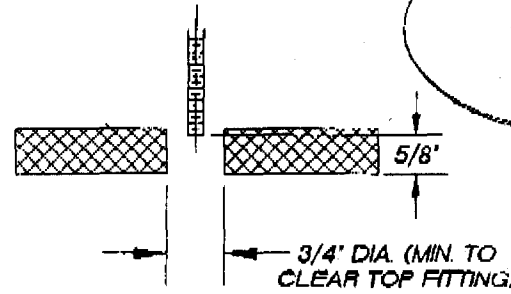
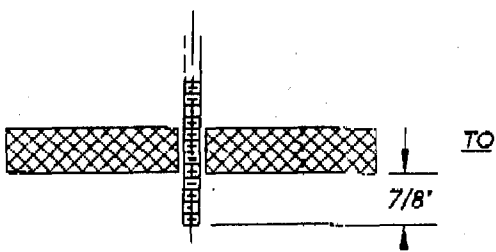
1/4-20 ROD
(BY OTHERS)

FITTING

CABLE

5' DIA. CEILING
PLATE ASSEMBLY

BOTTOM CABLE
FITTING



THE ABOVE DETAIL WILL POSITION
TOP FITTING WITH ENTIRE LENGTH
BELOW CEILING LINE.

THE ABOVE DETAIL WILL POSITION
TOP FITTING WITH BOTTOM EDGE
FLUSH WITH BOTTOM OF SLIP RING.

DETAIL 'A'

REFER TO FACTORY SUPPLIED LAYOUT
DRAWINGS FOR ALL MOUNTING LOCATIONS

NO. IS0003