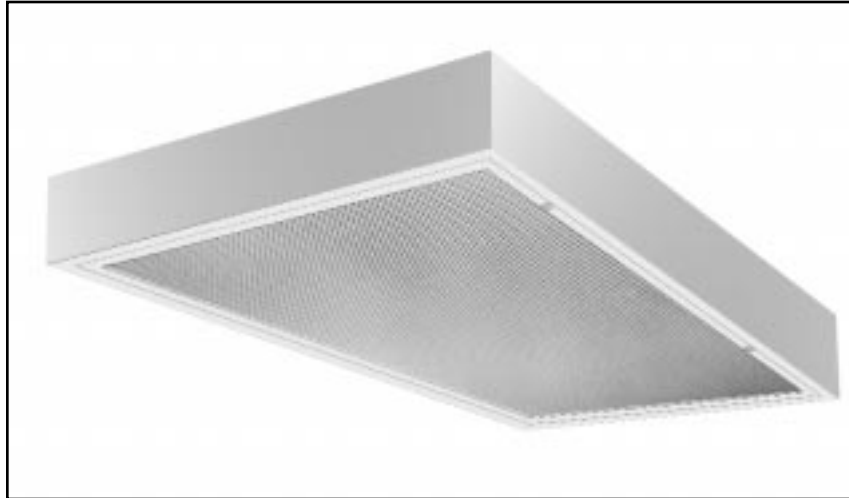


APPLICATIONS

The SECURLUME® series of surface troffers are designed and precision engineered for durability and high efficiency. Fully gasketed construction for resistance to moisture, dust and vermin. The SECURLUME is U.L. and C.U.L. listed for damp locations and wet locations. Suitable for use in Hospitals, Psychiatric Wards, Penal Institutions, Laboratories, Exterior Soffits, Toll Booths and High Abuse Areas.



SPECIFICATIONS

HOUSING: Die formed of 20 ga. cold rolled prime steel, rigidly fabricated, and electrically welded to insure true and perfect alignment. Vermin proof units are optionally available with all seams silicone sealed to resist moisture, dust and bacteria, suffix "VP" after catalog no.

SOCKET PLATE: Die formed of code gauge cold rolled steel, securely mounted, accessible for maintenance.

REFLECTOR: CAD/CAM designed and formed of code gauge steel to optically correct contour to provide precise light distribution with maximum efficiency, and effective glare control, removable to access wiring. XTRALUME® energy efficient reflector available (see OPTIONS).

DOOR FRAME ASSEMBLY: Heavy gauge extruded aluminum door frame with precision mitered corners, and a fully integrated gasket to prohibit entrance of moisture, dust, or bacteria. Door frames are secured by knurled head screws opposite concealed continuous hinge.

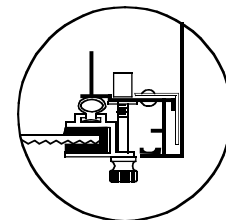
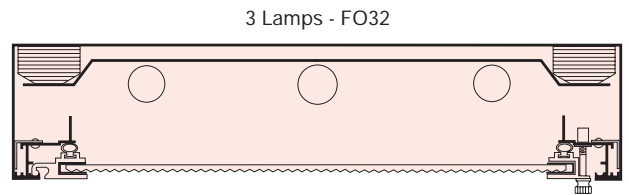
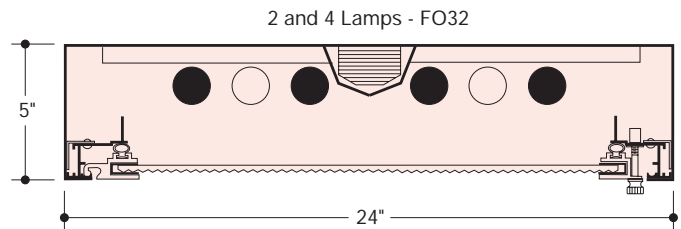
ELECTRICAL: Thermally protected Class "P" Energy Saving Rapid Start HPF 265MA-T8 electronic ballasts standard for 118V 60 Hz operation. Other ballasts, voltages and frequencies available, consult factory.

MOUNTING: Installed flush with ceiling, surface or stem mounted, singly or in continuous rows. For continuous mounting - knockouts are removed in end and units joined together. *Adequate knockouts for stem or flush surface mounting are provided.

*When specifying VP-vermin proof option, consult and advise factory for knockout locations.

FINISH: All steel component parts are completely protected against rust and discoloration after fabrication through an automated conveyerized multi-stage phosphate bonding process. Finished with an electrostatic baked white polyester thermosetting powder coating. This electronic computer controlled integrated system assures consistent 88%+ reflectance efficiency and maximum durability.

CERTIFICATION: The SECURLUME® Series 642 is U.L. and C.U.L. listed and bears the label of the I.B.E.W./AFL-CIO, Local #3. Listed for damp locations "DL", and Wet Locations "WL".



**FULLY INTEGRATED
DUAL GASKETING
FOR OPTIMUM SEALING**

SECURLUME®, XTRALUME® and LEGION® are registered trademarks of LEGION LIGHTING CO., INC.

ORDERING DATA

Catalog No.	No. and Type Lamps	Weight	Nominal Size
642-232	2-FO32-OCT-T8	42	2' x 4'
642-332	3-FO32-OCT-T8	45	
642-432	4-FO32-OCT-T8	45	

OCTRON™ is a registered trademark of OSRAM SYLVANIA.

OPTIONS

Suffix "LT" after catalog no. for cold weather ballast.
 Suffix "EM" after cat. no. for emerg. battery pack, see price list for types.
 Suffix "DL" after catalog no. for damp location.
 Suffix "WL" after catalog no. for wet location.
 Suffix "VP" after catalog no. for vermin proof, silicone sealant all seams.
 Suffix "TP" after catalog no. for tamper proof screws.
 Suffix "XTA" after catalog no. for XTRALUME® silver reflector std. with 85% reflectance, for 95% reflectance please specify your requirements.

ENERGY SAVING BALLASTS Where applicable (consult factory).
 Suffix "ESB" after catalog number, then / and one of the following:

MAGNETIC

"OCT"-Octron T8 Ballast

ELECTRONIC

"EBO"-Electronic T8 Octron Ballast

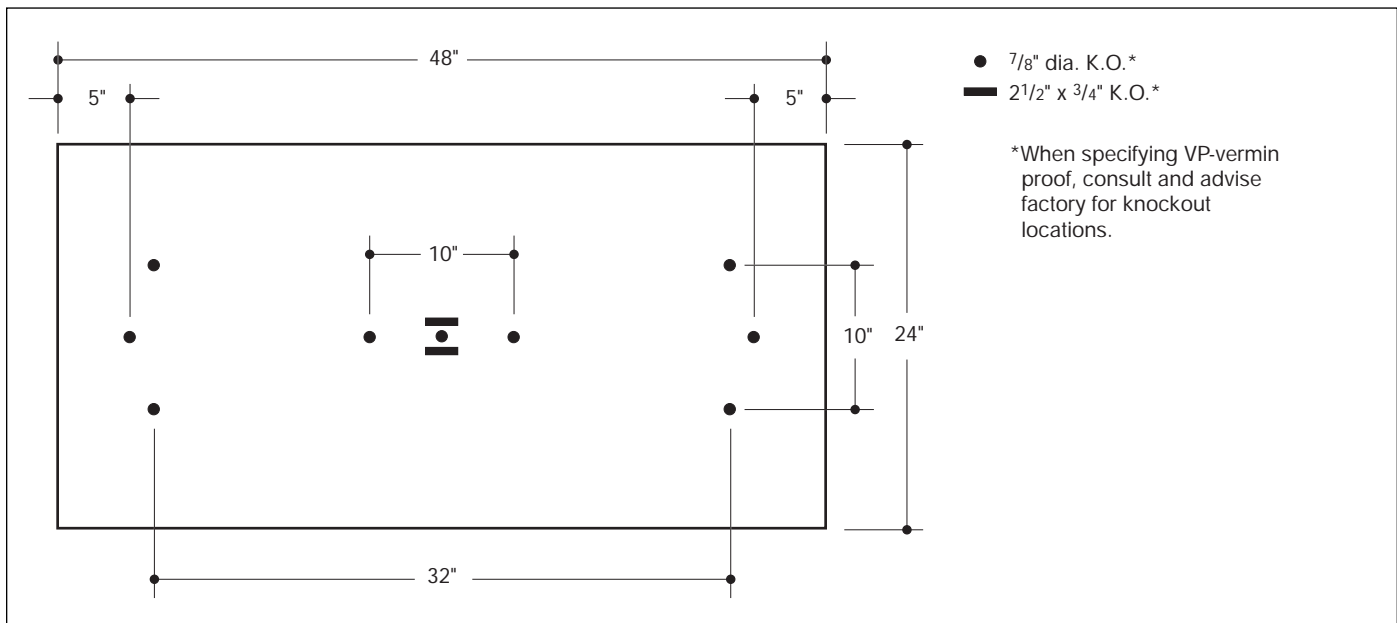
"EBDO"-Electronic T8 Dimming Ballast

SHIELDING MEDIA

- Type (RFA) acrylic plastic refractor.
- Type (FA) flat white acrylic.
- Type (K19A) KSH K19 acrylic lens.
- Type (RFL) polycarbonate Lexan® prismatic refractor.
- Type (C70T) Corning (AIG) #70 tempered prismatic glass refractor.
- Type (ACR) KSH-K12 acri-tuf prismatic refractor.

• Recommended lenses for security areas. CONSULT FACTORY FOR MINIMUM QUANTITY ORDER AND AVAILABILITY.
 Select the diffuser required and add suffix to catalog number.
 Example: 642-232-RFA

BACK PLANS



FOR PHOTOMETRIC DATA CONSULT FACTORY.
 Information supplied primarily for illustrative purposes, subject to change.
 Consult factory for verification and minimum quantity orders.