

APPLICATIONS

The COMFORT-LUME® TVC series offers the specifier and designer a new concept for Tele-Conference and Classroom lighting where VDT displays are utilized, providing glare free soft harmonious lighting. Harshness is eliminated with the advantage of low angle shielding and no obtrusive dark protrusions below the ceiling line, leaving a clean uncluttered ceiling. The specifiers' choice for use in Offices, Schools, Libraries, Hospitals, and Conference Rooms.



SPECIFICATIONS

HOUSING: Die formed of 20 gauge cold rolled prime steel, rigidly fabricated, and electrically welded to insure true and perfect alignment.

SOCKET PLATE: Die formed of code gauge cold rolled steel, securely mounted, socket accessible for maintenance.

REFLECTOR: CAD/CAM designed, XTALD-XTRALUME® lineal ribbed matte diffuse aluminum is standard. Heavy gauge steel, white Tex-Tone™ reflector optionally available (see OPTIONS).

LAMP SHIELD: One piece heavy gauge perforated metal, precision formed and integrated with a white acrylic overlay and easily lowered for relamping without the use of tools. (See OPTIONS).

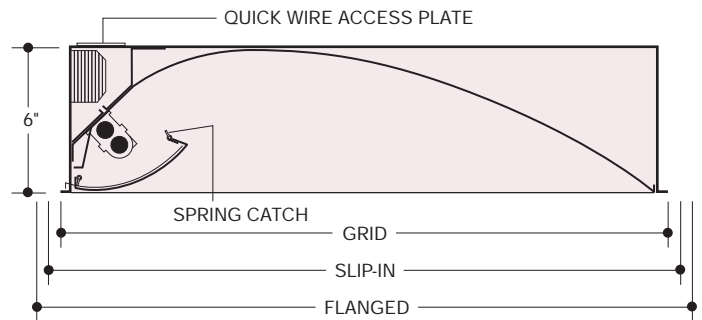
ELECTRICAL: Thermally protected Class "P" Energy Saving Rapid Start HPF, 270MA-Biax (Twin Tube) or 460MA-T5 Rapid Start HPF electronic ballasts for 118V 60 Hz operation standard. Other ballasts, voltages and frequencies available, consult factory.

MOUNTING: Designed to integrate into most standard ceilings. LEVEL-JACKS are supplied on concealed mechanical FLUSH TRIM or FLANGE TRIM units only. For grid type ceilings, unit rests on the flanges of the exposed spline or tee. Integral Pull-Out Clips are supplied on all Grid and Fine Line type ceilings. See CEILINGS, and specify type. Knockouts and wiring access plate are provided on back, with additional knockouts on ends for feed and thru-wiring.

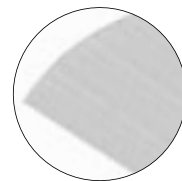
FINISH: All steel component parts are completely protected against rust and discoloration after fabrication through an automated conveyorized multi-stage phosphate bonding process. Finished with an electrostatic baked matte white Tex-Tone™ polyester thermosetting powder coating. This electronic computer controlled integrated system assures consistent 88%+ reflectance efficiency and maximum durability.

CERTIFICATION: The COMFORT-LUME® TVC Series 5822TV/5824TV are U.L. and C.U.L. listed and bear the label of the I.B.E.W./AFL-CIO, LOCAL #3. Optionally U.L. listed for Damp Location "DL".

COMFORT-LUME®, XTRALUME® and LEGION® are registered trademarks of LEGION LIGHTING CO., INC. TEX-TONE™ is a trademark of LEGION LIGHTING CO., INC.



NOM. SIZE	GRID	SLIP-IN	FLANGED
2' x 2'	23 ³ / ₄ " x 23 ³ / ₄ "	23 ¹⁵ / ₁₆ " x 23 ¹⁵ / ₁₆ "	25" x 25"
2' x 4'	23 ³ / ₄ " x 47 ³ / ₄ "	23 ¹⁵ / ₁₆ " x 47 ¹⁵ / ₁₆ "	25" x 49"



HI-TECH lineal ribbed matte diffuse XTRALUME® reflector.



EASY SWING DOWN PERFORATED SHIELD WITH SPRING CATCH.

ORDERING DATA

Nom. Size	No. and Type Lamps	Specify Ceiling	Wt.	Catalog No.
2' x 2'	▲ 1-F40TT/RS	F, J, S	29	5822TV-1BX40
	▲ 1-F50TT/RS			5822TV-1BX50
	▲ 1-F55TT/RS			5822TV-1BX55
	1-F14-T5			5822TV-114
	2-F14-T5			5822TV-214
	1-F24HO-T5			5822TV-124HO
	2-F24HO-T5			5822TV-224HO
2' x 4'	▲ 2-F40TT/RS	F, J, S	54	5824TV-2BX40
	▲ 2-F50TT/RS			5824TV-2BX50
	▲ 2-F55TT/RS			5824TV-2BX55
	1-F28-T5			5824TV-228
	2-F28-T5			5824TV-228
	1-F54HO-T5			5824TV-154HO
	2-F54HO-T5			5824TV-254HO

▲ F40TT/RS, F50TT/RS and F55TT/RS are the ANSI designation of various lamp manufacturers, i.e. G.E. Lighting "BIAX", Phillips "PL", Osram "Dulux L", Sylvania TWIN TUBE.

OPTIONS

Suffix "LT" after catalog no. for cold weather ballast.
 Suffix "EM" after catalog no. for emergency battery pack, see price list for types.
 Suffix "DL" after catalog no. for damp location.
 Suffix "WTT" after catalog no. for white TEX-TONE™ reflector in lieu of the standard XTALD/XTRALUME® reflector.

LAMP SHIELDS

Perforated metal shields with white acrylic overlay is standard.

OPTIONAL LAMP SHIELDS

Suffix "MPF" after catalog no. for perforated metal shields without white acrylic overlay.
 Suffix "MSS" after catalog no. for non-perforated solid metal shields.

ENERGY SAVING BALLASTS Where applicable (consult factory).

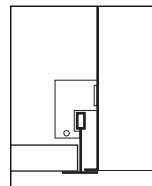
Suffix "ESB" after catalog number, then / and one of the following:

ELECTRONIC

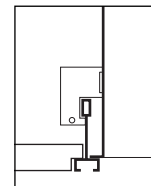
- "EBX"-Electronic (BIAX) Twin Tube Ballast
- "EBDX"-Electronic (BIAX) Twin Tube Dimming Ballast
- "EBDP"-Electronic T5 Dimming Ballast

CEILINGS

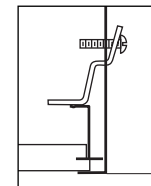
- ++ Type (J) Exposed inverted "T" ceiling.
- ++ Type (J) Concealed inverted "T" ceiling.
- ++ Type (J) Exposed inverted "T", Tegular ceiling.
- ++ Type (J) Exposed inverted "T", Finline ceiling.
- + Type (F) Flanged, Concealed "Z" spline ceiling.
- + Type (S) Flush, Concealed "Z" spline ceiling.
- ++ (J) Exposed troffer supplied with pull-out clips. The corners of the ceiling opening should be well supported to withstand the weight of the troffer.
- + (F) Flanged and (S) Flush troffers provided with leveling jacks. Z splines must face outward from troffer.



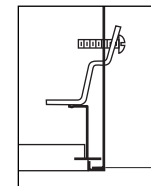
EXPOSED "T" BAR Type "J" Lay-In



FINE LINE Type "J" Lay-In



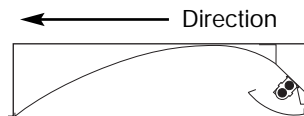
CONCEALED "Z" BAR Type "F" Flanged trim



CONCEALED "Z" BAR Type "S" Slip-In flush trim

PHOTOMETRIC DATA

Illuminance (Footcandles)



	0.75	2.25	3.75	5.25	6.75	8.25	9.75	11.25	12.75	14.25	15.75	17.25	18.75	20.25	21.75	23.25	24.75	26.25	27.75	29.25
23.40	32.0	34.1	37.6	39.1	38.2	37.3	36.9	38.0	39.2	37.3	34.6	33.2	32.3	32.0	29.7	24.4	19.2	15.1	12.3	11.1
22.20	35.8	38.2	42.2	44.5	43.3	41.3	41.0	42.6	44.0	42.5	39.1	36.7	36.5	36.8	34.2	28.0	21.3	16.1	12.9	11.5
21.00	39.2	42.1	47.1	50.0	48.4	45.7	45.2	47.3	49.4	47.8	43.6	40.7	40.7	41.6	39.0	31.7	23.5	17.3	13.4	11.8
19.80	42.4	45.6	51.4	54.9	52.9	49.6	48.9	51.5	54.1	52.4	47.5	44.1	44.4	45.7	43.0	34.8	25.5	18.4	14.0	12.3
18.60	44.4	47.7	53.9	57.6	55.4	51.7	51.0	53.9	56.7	54.9	49.7	46.1	46.5	47.9	45.2	36.4	26.5	18.9	14.3	12.5
17.40	45.4	48.9	55.1	58.7	56.4	52.7	52.1	54.9	57.8	55.9	50.6	46.9	47.3	48.7	45.8	36.8	26.9	19.2	14.6	12.7
16.20	45.7	48.8	54.4	57.7	55.5	52.0	51.5	54.1	56.7	54.8	49.7	46.2	46.4	47.5	44.5	35.9	26.3	19.0	14.6	12.7
15.00	45.4	47.6	52.4	55.1	53.1	50.1	49.8	52.0	54.0	52.0	47.5	44.5	44.4	45.0	41.7	33.7	25.1	18.5	14.3	12.8
13.80	44.6	46.2	50.0	52.0	50.1	47.8	47.7	49.5	50.9	48.9	45.0	42.4	42.1	42.1	38.6	31.3	23.7	17.8	14.1	12.7
12.60	43.9	45.2	48.5	49.9	48.2	46.3	46.4	47.9	48.9	46.8	43.3	41.1	40.7	40.3	36.6	29.7	22.8	17.4	13.9	12.6
11.40	43.9	45.2	48.5	49.9	48.2	46.3	46.4	47.9	48.9	46.8	43.3	41.1	40.7	40.3	36.6	29.7	22.8	17.4	13.9	12.6
10.20	44.6	46.2	50.1	52.0	50.1	47.8	47.7	49.5	50.9	48.9	45.0	42.4	42.2	42.1	38.6	31.3	23.7	17.8	14.1	12.7
9.00	45.5	47.7	52.5	55.2	53.1	50.2	49.8	52.0	54.1	52.1	47.6	44.5	44.5	45.0	41.8	33.8	25.1	18.5	14.4	12.8
7.80	45.8	48.8	54.5	57.8	55.6	52.1	51.6	54.2	56.7	54.8	49.8	46.3	46.5	47.6	44.5	35.9	26.3	19.0	14.6	12.8
6.60	45.5	49.0	55.1	58.8	56.5	52.8	52.2	55.0	57.9	56.0	50.6	47.0	47.3	48.7	45.8	36.9	26.9	19.2	14.6	12.7
5.40	44.5	47.8	54.0	57.7	55.5	51.9	51.2	54.0	56.9	55.0	49.8	46.2	46.5	48.0	45.2	36.4	26.5	18.9	14.3	12.5
4.20	42.5	45.7	51.5	55.0	53.1	49.7	49.1	51.6	54.2	52.5	47.6	44.2	45.5	45.8	43.1	34.8	25.5	18.4	14.0	12.3
3.00	39.3	42.3	47.3	50.2	48.6	45.9	45.4	47.5	49.6	47.9	43.7	40.8	40.8	41.6	39.0	31.7	23.6	17.3	13.5	11.9
1.80	36.0	38.4	42.4	44.7	43.4	41.5	41.2	42.8	44.2	42.6	39.2	36.9	36.6	36.8	34.2	28.0	21.3	16.2	12.9	11.5
0.60	32.2	34.4	37.7	39.2	38.3	37.4	37.1	38.1	39.2	37.3	34.7	33.2	32.3	31.9	29.5	24.3	19.1	15.1	12.4	11.1

Catalog Number J5824TV-2BX40

Illumination levels indicated are computed with © Lumen-Micro Version 7.5 based on the following Room Reflectance Factors:

Ceiling 80%; Walls 50%; Floor 20%

Room Size:

30'-0" x 24'-0" x 9'-0"

Light Loss Factor:

(LLD) x (LDD) x (BF) = 1.0

Workplane Height:

2'-6"

LTL Test Report #03857 (F40TT/RS) 3150 lumens per lamp

Minimum fc: 11.1

Maximum fc: 59

Average fc: 40

Watts/ft²: 1.183

© Lumen-Micro Version 7.5 is software Copyright of Lighting Technologies, Inc.

Information supplied primarily for illustrative purposes, subject to change. Consult factory for verification and minimum quantity orders. Photometrics and/or performance summaries for your particular layout available, consult factory.