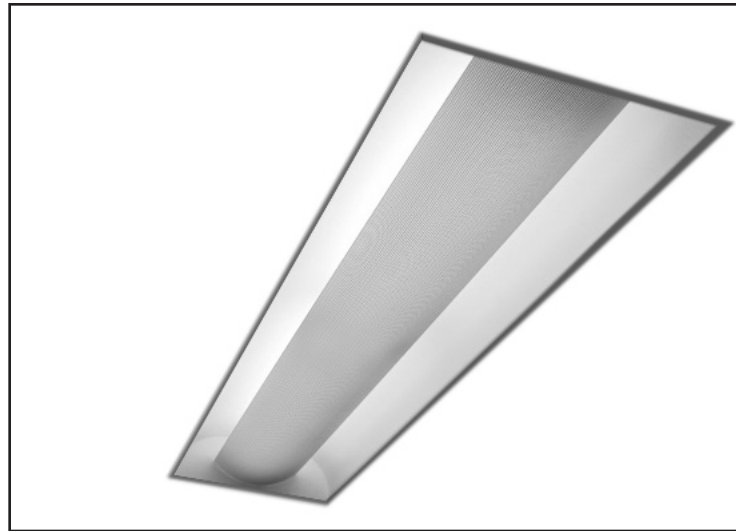


## APPLICATIONS

The COMFORT-LUME® series offers a new and attractive alternative to present-day conventional lighting systems. A recess direct/indirect troffer emitting glare free light with a soft and harmonious blend. Making the environment comfortable and appealing. Harshness is eliminated and no obtrusive dark protrusions below the ceiling line, leaving a clean uncluttered ceiling. The specifiers' choice for use in Offices, Showrooms, Schools, Lobbies, Corridors, Libraries, Hospitals, and Conference Rooms.



## SPECIFICATIONS

**HOUSING:** Die formed of 20 gauge cold rolled prime steel, rigidly fabricated, and electrically welded to insure true and perfect alignment.

**SOCKET PLATE:** Die formed of 20 gauge cold rolled steel, securely mounted, socket accessible for maintenance.

**REFLECTOR:** CAD/CAM designed heavy gauge cold rolled steel formed to optically correct contour to provide precise light distribution with maximum efficiency, and effective glare control, removable to access wiring. XTALD-XTRALUME®, energy efficient reflector available (see Options listing).

**LAMP SHIELD:** One piece heavy gauge perforated metal, precision formed and integrated with a white acrylic overlay and easily lowered for relamping without the use of tools. (See Options listing).

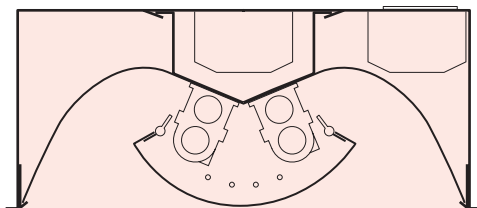
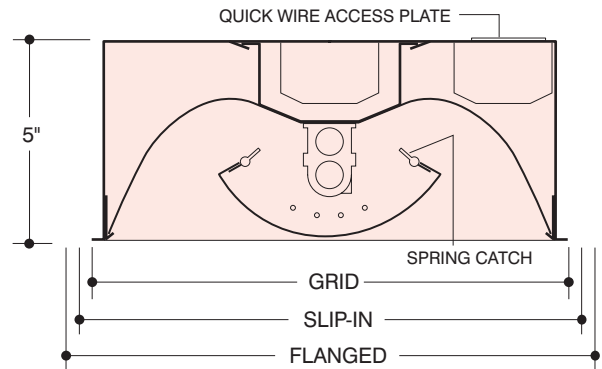
**ELECTRICAL:** Thermally protected Class "P" Energy Saving Rapid/Instant Start HPF, 270MA-Biax (Twin Tube) electronic ballasts, or T5 HPF, 460MA Rapid Start electronic ballasts for 118V 60 Hz operation standard. Other electronic ballasts, other voltages and frequencies available, consult factory. (See Options listing).

**MOUNTING:** Designed to integrate into most standard ceilings. LEVELJACKS are supplied on concealed mechanical FLUSH TRIM units only. For grid type ceilings, unit rests on the flanges of the exposed spline or tee. Integral Pull-Out Clips are supplied on all Grid and FineLine type ceilings. See ceilings and specify type. Knockouts and wiring access plate are provided on back, with additional knockouts on ends for feed and thru-wiring.

**FINISH:** All steel component parts are completely protected against rust and discoloration after fabrication through an automated conveyorized multi-stage phosphate bonding process. Finished with an electrostatic baked white Tex-Tone™ polyester thermosetting powder coating. This electronic computer controlled integrated system assures consistent 88%+ reflectance efficiency and maximum durability.

**CERTIFICATION:** The COMFORT-LUME Series 5812/5814 is U.L. and C.U.L. listed and bears the label of the I.B.E.W./AFL-CIO, Local #3. Optionally U.L. listed for Damp Location "DL".

COMFORT-LUME®, XTRALUME® and LEGION® are registered trademarks of LEGION LIGHTING CO., INC. TEX-TONE™ is a trademark of LEGION LIGHTING CO., INC.



Nom. Size	GRID	SLIP-IN
1' x 2'	11 <sup>3</sup> / <sub>4</sub> " x 23 <sup>3</sup> / <sub>4</sub> "	11 <sup>15</sup> / <sub>16</sub> " x 23 <sup>15</sup> / <sub>16</sub> "
1' x 4'	11 <sup>3</sup> / <sub>4</sub> " x 47 <sup>3</sup> / <sub>4</sub> "	11 <sup>15</sup> / <sub>16</sub> " x 47 <sup>15</sup> / <sub>16</sub> "



**SOFT HARMONIOUS GLARE-FREE PERFORATED SHIELD. NO DARK PROTRUSIONS BELOW CEILING**

12/01

**ORDERING DATA**

Nom. Size	No. and Type Lamps	Specify Ceiling	Weight	Catalog No.
1' x 2'	▲ 1-F40TT/RS	J, S	20	5812-1BX40 EBX
	▲ 2-F40TT/RS			5812-2BX40 EBX
	▲ 1-F50TT/RS			5812-1BX50 EBX
	▲ 2-F50TT/RS			5812-2BX50 EBX
	● 1-F55TT/RS			5812-1BX55 EBX
	● 2-F55TT/RS			5812-2BX55 EBX
	1-F14-T5			5812-114
	2-F14-T5			5812-214
	1-F24HO-T5			5812-124HO
	2-F24HO-T5			5812-224HO
1' x 4'	▲ 2-F40TT/RS	J, S	30	5814-2BX40 EBX
	▲ 4-F40TT/RS			5814-4BX40 EBX
	▲ 2-F50TT/RS			5814-2BX50 EBX
	▲ 4-F50TT/RS			5814-4BX50 EBX
	● 2-F55TT/RS			5814-2BX55 EBX
	● 4-F55TT/RS			5814-4BX55 EBX
	1-F28-T5			5814-128
	2-F28-T5			5814-228
	1-F54HO-T5			5814-154HO
	2-F54HO-T5			5814-254HO

- ▲ F40TT/RS, F50TT/RS and F55TT/RS is the ANSI designation of various lamp manufacturers, i.e.: G.E. Lighting "BIAX", Philips "PL", Osram "DULUX L", Sylvania TWIN TUBE.
- Consult factory for F55TT/RS lamp.

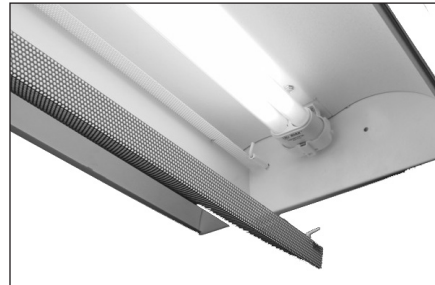


For a HI-TECH visual appearance, a lineal ribbed matte diffuse XTRALUME® reflector is optionally available in lieu of the standard white TEX-TONE reflector, add Suffix "XTALD" to catalog number and consult factory.

**OPTIONS**

- Suffix "LT" after catalog number for cold weather ballast.
- Suffix "EM" after catalog number for emergency battery pack, see price list for types.
- Suffix "DL" after catalog number for damp location.
- Suffix "XTALD" after catalog number and consult factory.
- For a HI-TECH visual appearance, a lineal ribbed matte diffuse XTRALUME reflector is optionally available in lieu of the standard white TEX-TONE reflector.
- LAMP SHIELD**  
Perforated metal shield with white acrylic overlay is standard.
- OPTIONAL LAMP SHIELD**  
Suffix "MPF" after catalog number for perforated metal shield without white acrylic overlay.
- Suffix "MSS" after catalog number for non-perforated solid metal shield.

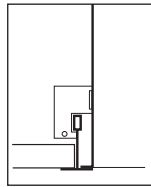
- ENERGY SAVING BALLASTS** Where applicable (consult factory).
- Suffix "ESB" / after catalog number, and then one of the following:
- ELECTRONIC**
- "EBX"-Electronic (BIAX) Twin Tube Ballast
- "EBDX"-Electronic (BIAX) Twin Tube Dimming Ballast
- "EBDP"-Electronic T5 Dimming Ballast



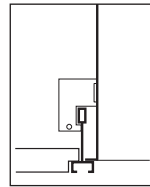
Easy swing down perforated shield on spring latch catches.

**CEILINGINGS**

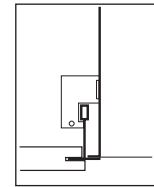
- ++ Type (J) Exposed inverted "T" ceiling.
- ++ Type (J) Concealed inverted "T" ceiling.
- ++ Type (J) Exposed inverted "T", Tegular ceiling.
- ++ Type (J) Exposed inverted "T", Fineline ceiling.
- + Type (S) Flush, Concealed "Z" spline ceiling, Z splines must face outward from troffer.
- + (S) Flush troffers provided with leveling jacks.
- ++ (J) Exposed troffers supplied with pull-out clips. The corners of the ceiling opening should be well supported to withstand the weight of the troffer.



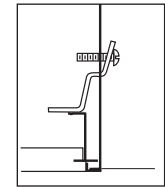
**EXPOSED "T" BAR**  
Type "J" Lay-In



**FINE LINE**  
Type "J" Lay-In



**CONCEALED "T" BAR**  
Type "J" Lay-In



**CONCEALED "Z" BAR**  
Type "S" Slip-In flush trim

**PHOTOMETRIC DATA**

	34.5	38.1	41.0	42.8	43.9	44.6	44.1	43.2	43.1	42.3	42.3	43.1	43.2	44.1	44.6	43.9	42.8	41.0	38.2	34.5
11'	38.2	42.4	45.5	47.7	48.9	49.1	48.7	47.5	46.6	46.1	46.1	46.6	47.5	48.7	49.1	48.9	47.7	45.6	42.5	38.3
	41.7	45.9	49.4	51.8	53.0	53.1	52.4	50.9	49.7	49.0	49.0	49.7	50.9	52.4	53.1	53.0	51.8	49.5	46.1	41.9
10'	44.4	49.1	53.1	55.8	57.0	56.8	55.9	54.1	52.7	51.8	51.8	52.7	54.1	55.9	56.8	57.1	55.9	53.2	49.5	44.7
	47.2	52.6	56.9	59.8	61.1	60.8	59.7	57.5	55.9	54.8	54.8	55.9	57.5	59.7	60.8	61.1	59.9	57.1	52.9	47.6
9'	49.5	55.2	59.8	62.8	64.1	63.7	62.5	60.2	58.3	57.2	57.2	58.3	60.2	62.5	63.7	64.2	62.9	60.0	55.6	49.9
	51.3	57.1	61.7	64.9	66.3	65.8	64.5	62.2	60.3	59.1	59.1	60.3	62.2	64.5	65.8	66.3	65.0	61.9	57.4	51.7
8'	53.0	58.7	63.4	66.5	68.0	67.5	66.3	63.9	62.1	60.9	60.9	62.1	63.9	66.3	67.5	68.0	66.6	63.6	59.0	53.5
	53.3	59.2	64.0	67.3	68.7	68.3	67.2	64.9	63.1	61.9	61.9	63.1	64.9	67.2	68.3	68.8	67.4	64.2	59.5	53.7
7'	53.6	59.7	64.5	67.7	69.2	68.9	67.8	65.5	63.7	62.6	62.6	63.7	65.5	67.8	68.9	69.3	67.8	64.7	59.9	53.9
	53.6	59.7	64.5	67.8	69.2	68.9	67.8	65.5	63.7	62.6	62.6	63.7	65.5	67.8	68.9	69.3	67.9	64.7	59.9	53.9
6'	53.3	59.3	64.0	67.3	68.8	68.3	67.2	65.0	63.1	62.0	62.0	63.1	65.0	67.2	68.4	68.8	67.4	64.2	59.6	53.7
	53.1	58.7	63.4	66.5	68.0	67.5	66.3	64.0	62.1	60.9	60.9	62.1	64.0	66.4	67.6	68.1	66.7	63.6	59.0	53.6
5'	51.3	57.1	61.8	65.0	66.4	65.9	64.6	62.3	60.4	59.2	59.2	60.4	62.3	64.6	65.9	66.4	65.1	62.0	57.5	51.9
	49.5	55.3	59.8	62.9	64.2	63.8	62.6	60.3	58.5	57.3	57.3	58.5	60.3	62.6	63.8	64.3	63.0	60.0	55.6	50.0
4'	47.2	52.7	57.0	59.9	61.2	60.9	59.8	57.5	56.0	55.0	55.0	56.0	57.5	59.8	60.9	61.3	60.0	57.2	53.0	47.7
	44.4	49.3	53.2	55.9	57.1	57.0	56.1	54.3	52.8	52.0	52.0	52.8	54.3	56.1	57.0	57.2	56.0	53.3	49.5	44.8
3'	41.7	46.0	49.5	51.8	53.1	53.2	52.6	51.1	49.9	49.2	49.2	49.9	51.1	52.6	53.2	53.1	51.9	49.6	46.2	42.0
	38.2	42.4	45.6	47.7	48.9	49.2	48.8	47.7	46.8	46.3	46.3	46.8	47.4	48.8	49.2	48.9	47.8	45.6	42.5	38.3
1'	34.5	38.1	41.0	42.8	43.9	44.5	44.1	43.4	43.2	42.5	42.5	43.2	43.4	44.1	44.5	43.9	42.8	41.0	38.2	34.6
	1'	2'	3'	4'	5'	6'	7'	8'	9'	10'	11'	12'	13'							

**Cat. No: J5814-2BX40 EBX**  
Illumination levels indicated are computed with © Lumen-Micro Version 7.0 based on the following Room Reflectance Factors:  
**Ceiling 80% Walls 50% Floor 20%**  
**Room Size:**  
12'-0" x 14'-0" x 8'-0"  
**Light Loss Factor:**  
(LLD) x (LDD) x (BF) = 1.0  
**Workplane Height:**  
2'-6"  
Lamps: 2 (F40TT/RS)  
3150 lumens per lamp.  
Minimum fc: 38.9  
Maximum fc: 76.7  
Average fc: 60.2  
Watts/ft<sup>2</sup>: 1.6

© Lumen-Micro Version 7.0 is software Copyright of Lighting Technologies, Inc.

Information supplied primarily for illustrative purposes, subject to change. Consult factory for verification and minimum quantity orders. Photometrics and/or performance summaries for your particular layout available, consult factory.