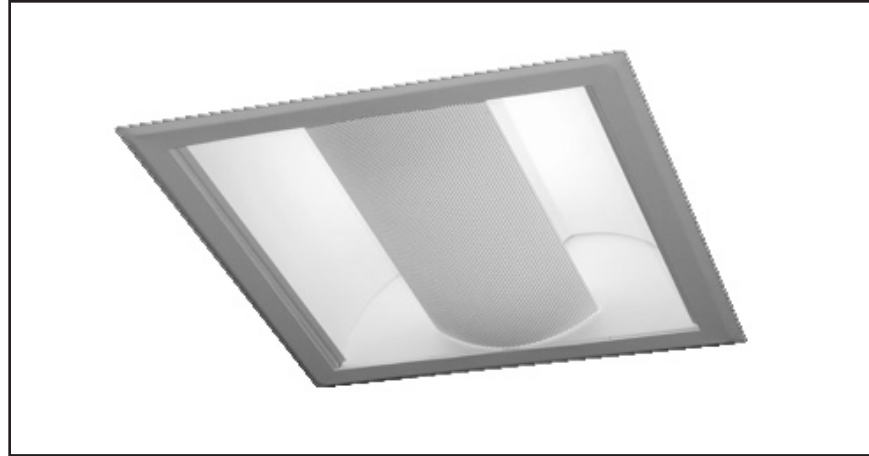


APPLICATIONS

The COMFORT-LUME CUBE® offers a new and attractive alternative to present-day conventional lighting systems. A recess direct/indirect downlight emitting glare free light with a soft and harmonious blend. Making the environment comfortable and appealing. Harshness is eliminated and no obtrusive dark protrusions below the ceiling line, leaving a clean uncluttered ceiling. The specifiers' choice with a new look, for use in Offices, Showrooms, Schools, Lobbies, Corridors, Libraries, Hospitals, and Conference Rooms.



SPECIFICATIONS

HOUSING: Die formed of 20 gauge cold rolled prime steel, rigidly fabricated, and electrically welded to insure true and perfect alignment.

SOCKET PLATE: Die formed of 20 gauge cold rolled steel, securely mounted, socket accessible for maintenance.

REFLECTOR: CAD/CAM designed heavy gauge cold rolled steel formed to optically correct contour to provide precise light distribution with maximum efficiency, and effective glare control, removable to access wiring. XTALD-XTRALUME® energy efficient reflector available (see Options listing).

TRIM FRAME: Die formed one piece seamless, 13" x 13" x 1" wide, 20 ga. steel, post powder coated white finish. Installed upon completion of ceiling by means of concealed tabs to fixture housing.

LAMP SHIELD: One piece heavy gauge perforated metal, precision formed and integrated with a white acrylic overlay and easily lowered for relamping without the use of tools. (See Options listing).

ELECTRICAL: Thermally protected Class "P" Energy Saving Rapid/Instant Start HPF, 270MA-Biax (Twin Tube) electronic ballast for 118V 60 Hz operation standard. Other electronic ballasts, other voltages and frequencies available, consult factory. (See Options listing).

QUICK WIRE ACCESS PLATE: Permits wiring without opening fixture, includes two 7/8" K.O's and grounding screw.

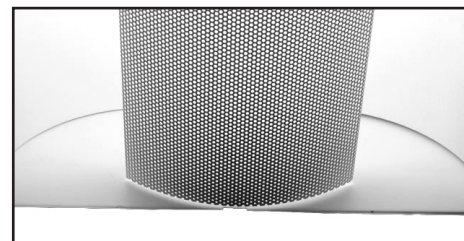
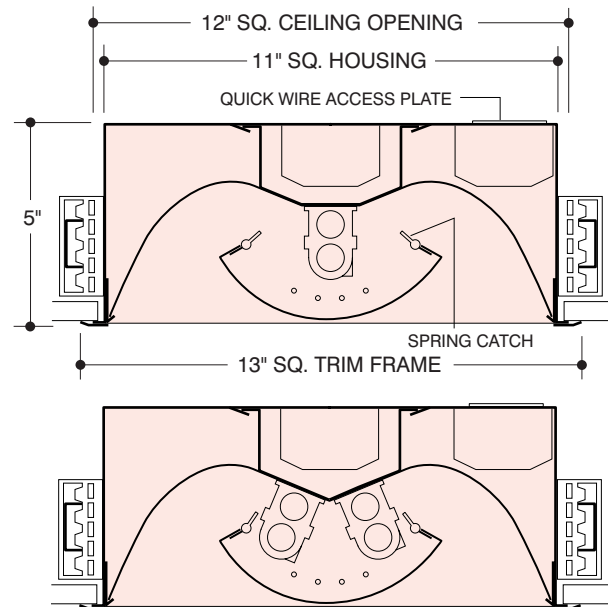
QUICK MOUNT BRACKETS: Die formed of 16 ga. steel suitable for use with standard 3/4" and 1 1/2" Lathing channels (by others) or optional Mounting Bars (see Options). Adjustable from within housing.

MOUNTING: For mounting in Exposed Grid, Concealed Spline, Gypsum Board and Plaster Ceilings, designed to integrate into most standard ceilings. HOUSING MUST BE INSTALLED BEFORE COMPLETION OF FINISHED CEILING.

FINISH: All steel component parts are completely protected against rust and discoloration after fabrication through an automated conveyerized multi-stage phosphate bonding process. Finished with an electrostatic baked matte white Tex-Tone™ polyester thermosetting powder coating. This electronic computer controlled integrated system assures consistent 88%+ reflectance efficiency and maximum durability.

CERTIFICATION: The COMFORT-LUME CUBE® Series 5811 is U.L. and C.U.L. listed and bears the label of the I.B.E.W./AFL-C10, Local #3. Optionally U.L. listed for Damp Location "DL".

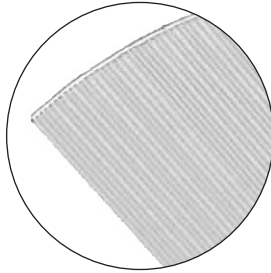
COMFORT-LUME®, XTRALUME® and LEGION® are registered trademarks of LEGION LIGHTING CO., INC. TEX-TONE™ is a trademark of LEGION LIGHTING CO., INC.



**SOFT HARMONIOUS GLARE-FREE
PERFORATED SHIELD. NO DARK
PROTRUSIONS BELOW CEILING**

ORDERING DATA

Nominal Size	No. and Type Lamps	Socket Base	Weight	Catalog No.
1' x 1'	1-FT18W/RS	2G11	13	5811-1BX18
1' x 1'	2-FT18W/RS	2G11	13	5811-2BX18



For a HI-TECH visual appearance, a lineal ribbed matte diffuse XTRALUME® reflector is optionally available in lieu of the standard white TEX-TONE reflector, add Suffix "XTALD" to catalog number and consult factory.

OPTIONS

Suffix "LT" after catalog number for cold weather ballast.
 Suffix "*EM" after catalog number for emergency battery pack, see price list for types.
 Suffix "DL" after catalog number for damp location.
 Suffix "XTALD" after catalog number and consult factory.
 For a HI-TECH visual appearance, a linear ribbed matte diffuse XTRALUME reflector is optionally available in lieu of the standard white TEX-TONE™ reflector.
 MOUNTING BARS: Set of two 18", suffix "MB18" to cat. no.
 Set of two 27", suffix "MB27" to cat. no.

Battery pack mounted on top of fixtura, add 2 to depth, or mounted remote in separate box.

LAMP SHIELD

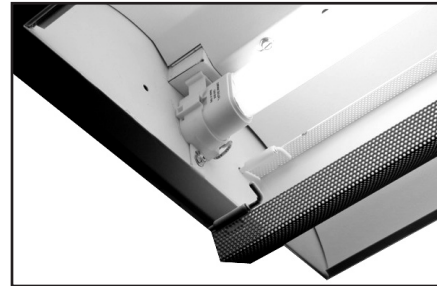
Perforated metal shield with white acrylic overlay is standard.

OPTIONAL LAMP SHIELD

Suffix "MPF" after catalog number for perforated metal shield without white acrylic overlay.
 Suffix "MSS" after catalog number for non-perforated solid metal shield.

ELECTRONIC BALLAST - Suffix one of the following:

"EBX"-Electronic (BIAX) Twin Tube Ballast (Standard)
 "EBDX"-Electronic (BIAX) Twin Tube Dimming Ballast



Easy swing down perforated shield on spring latch catches.

PHOTOMETRIC DATA

Performance summaries for your particular layout available, consult factory.

Information supplied primarily for illustrative purposes, subject to change.
 Consult factory for verification and minimum quantity orders.
 Photometrics and/or performance summaries for your particular layout available, consult factory.