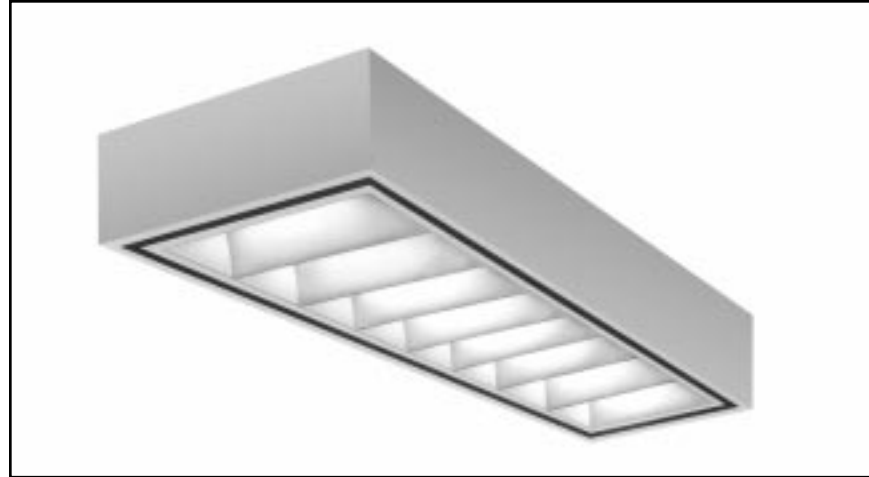


APPLICATIONS

The PARALUME® series of surface luminaires are designed for individual or continuous row installations. The unit is ideal for offices, class rooms and libraries. The deep cell anodized low iridescence aluminum louver eliminates glare and ceiling reflections when used in task situations. Precise welding eliminates any light leaks at seams in housing.



SPECIFICATIONS

HOUSING: Die formed of 20 ga. cold rolled steel, rigidly fabricated, and electrically welded to insure true and perfect alignment.

SOCKET PLATE: Die formed of code gauge steel, securely mounted and readily removable for socket maintenance.

REFLECTOR: Die formed of code gauge steel, securely mounted to housing. Formed to optically correct contour to provide maximum efficiency, removable to access wiring without the use of tools. XTRALUME® energy efficient reflector available (see OPTIONS).

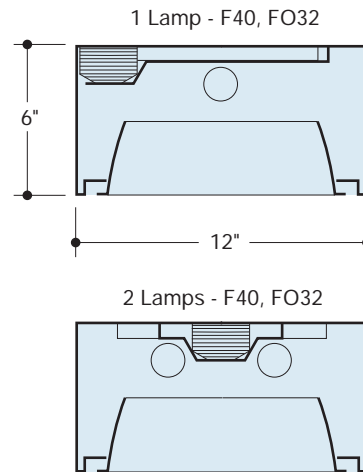
LOUVER: Large cell parabolic louver fabricated from semi-specular anodized low iridescence aluminum. Blades are precisely formed and rigidly assembled to maintain parabolic contour and assure proper surface brightness control. The louver assembly hinges from either side allowing access to the interior without the use of tools and floats within the housing in a fully bordered matte black reveal.

ELECTRICAL: Thermally protected Class "P" Energy Saving Instant Start HPF 265MA-T8 electronic ballasts standard for 118V 60 Hz operation. Other ballasts, voltages and frequencies available, consult factory.

MOUNTING: Designed for flush mounting on ceiling, Surface or Stem mounted, singly or in continuous rows. For continuous rows, knockouts are removed in end cap and units are joined together. Adequate knockouts for stem or flush surface mounting are provided.

FINISH: All steel components parts are completely protected against rust and discoloration after fabrication through an automated conveyorized multi-stage phosphate bonding process. Finished with an electrostatic baked white polyester thermosetting powder coating. This electronic computer controlled integrated system assures consistent 88%+ reflectance efficiency and maximum durability.

CERTIFICATION: The Paralume® Series 541 luminaire is U.L. and C.U.L. listed and bears the label of the I.B.E.W./AFL-CIO, Local #3. Optionally U.L. and C.U.L. listed for damp locations "DL".



LOUVERS



PB8/3
8 CELL



PB16/3
16 CELL



•PB9/3
9 CELL



•PB12/3
12 CELL



•PBL12/3
12 CELL

• Refer to OPTIONS on reverse side

PARALUME®, XTRALUME® and LEGION® are registered trademarks of LEGION LIGHTING CO., INC.

8/03

ORDERING DATA

Catalog No.	No. and Type Lamps	Louver # of Cells*	Wt.	Nom. Size
541-132-PB8/3 EBO	1-FO32-OCT-T8	8	29	1 x 4
541-232-PB8/3 EBO	2-FO32-OCT-T8	8	29	1 x 4
541-232-PB16/3 EBO	2-FO32-OCT-T8	16	30	1 x 4

* Other louver cellular patterns available, see OPTIONS and consult factory.

ADVISE FACTORY WHEN STEM MOUNTING ONE-LAMP UNITS.

OPTIONS

- Suffix "DIM" after catalog no. for dimming ballast.
- Suffix "LT" after catalog no. for cold weather ballast.
- Suffix "EM" after catalog. no. for emergency battery pack, see price list for types.
- Suffix "DL" after catalog no. for damp location.
- Suffix "PB9/3" after cat. no. for 9 cell louver.
- Suffix "PB12/3" after cat. no. for 12 cell louver.
- Suffix "PBL12/3" after cat. no. for 12 cell lateral blade louver.
- Suffix "WH" after cat. no. for white finish on louver.
- Suffix "SSG" after cat. no. for Semi-Specular Gold finish on louver.
- Suffix "XTA" after catalog no. for XTRALUME® silver reflector standard with 85% reflectance, for 95% reflectance please specify your requirements.
- Consult factory for availability and minimum quantity order.

ENERGY SAVING BALLASTS Where applicable (consult factory). Suffix "ESB" after catalog number, then / and one of the following:

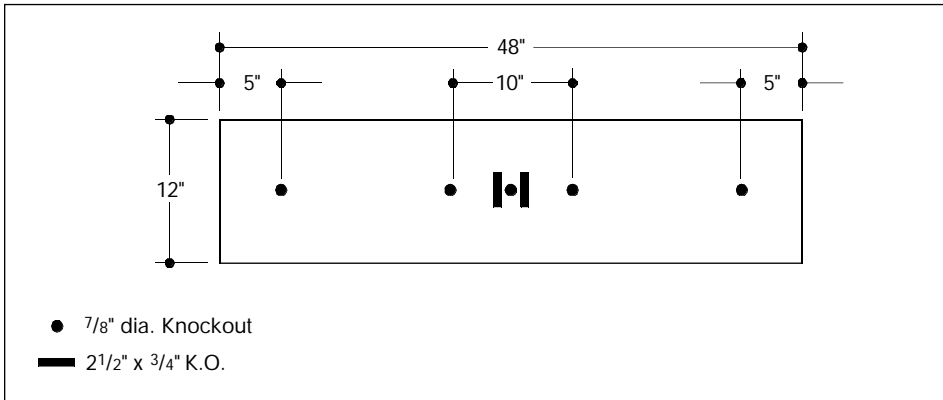
MAGNETIC

"OCT"-Octron T8 Ballast

ELECTRONIC

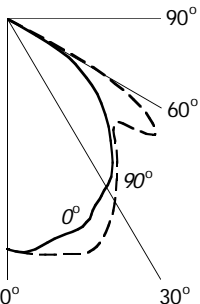
- "EB"-Electronic T12 Ballast
- "EBO"-Electronic T8 Octron Ballast
- "EBDO"-Electronic T8 Dimming Ballast

BACK PLAN



PHOTOMETRICS

Cat. No. **541-232-PB8/3 EBO**
 8 cell semi-specular aluminum louver.
 Lamps: (2) FO32-OCT-T8
 each rated 2900 lumens.
 Total Luminaire efficiency = 55.7%
 Plane 0-Deg. 90 Deg.
 Spacing Criteria 1.20 1.27



Coefficients of Utilization - Zonal Cavity Method									
Floor	20%								
Ceiling	80%			70%			50%		
Walls	70%	50%	30%	70%	50%	30%	50%	30%	10%
0	.66	.66	.66	.64	.64	.64	.61	.61	.61
1	.61	.59	.58	.60	.58	.56	.56	.55	.53
2	.57	.53	.50	.56	.52	.49	.50	.48	.46
3	.53	.48	.44	.51	.47	.43	.45	.42	.40
4	.49	.43	.39	.47	.42	.38	.41	.37	.35
5	.45	.39	.34	.44	.39	.34	.37	.33	.31
6	.42	.35	.31	.41	.35	.30	.34	.30	.27
7	.39	.32	.27	.38	.31	.27	.31	.27	.24
8	.36	.29	.25	.35	.29	.25	.28	.24	.22
9	.34	.27	.23	.33	.27	.22	.26	.22	.20
10	.32	.25	.21	.31	.25	.21	.24	.20	.18

Zonal Lumen Summary			
Zone	Lumens	% Lamp	% Fixt.
0-30	1298	20.3	36.4
0-40	2068	32.3	58.0
0-60	3378	52.8	94.8
0-90	3565	55.7	100.0

Average Luminance (Footlamberts)		
Vertical Angle	Horizontal Plane	
	0°	90°
45	452	532
55	280	679
65	55	173
75	14	31
85	0	4

Information supplied primarily for illustrative purposes, subject to change. Consult factory for verification and minimum quantity orders. For other photometric data, consult factory

