

## APPLICATIONS

The COMFORT-LUME® series offers a new and attractive alternative to present-day conventional lighting systems. A surface direct/indirect unit emitting glare free light with a soft and harmonious blend. Making the environment comfortable and appealing. Harshness is eliminated. Shallow profile, minimal protrusion below the ceiling plane, leaving a clean contemporary look.

The specifiers' choice for use in Offices, Showrooms, Schools, Lobbies, Corridors, Libraries, Hospitals, and Conference Rooms.



## SPECIFICATIONS

**HOUSING:** Die formed of 20 gauge cold rolled prime steel, rigidly fabricated, and electrically welded to insure true and perfect alignment.

**SOCKET PLATE:** Die formed of 20 gauge cold rolled steel, securely mounted, socket accessible for maintenance.

**REFLECTOR:** CAD/CAM designed heavy gauge cold rolled steel formed to optically correct contour to provide precise light distribution with maximum efficiency, and effective glare control, removable to access wiring. XTALD-XTRALUME® energy efficient reflector available (see OPTIONS).

**LAMP SHIELD:** One piece heavy gauge perforated metal, precision formed and integrated with a white acrylic overlay and easily lowered for relamping without the use of tools. (See OPTIONS).

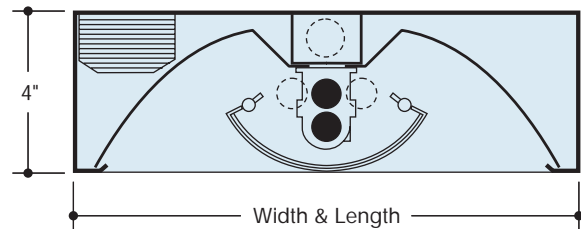
**ELECTRICAL:** Thermally protected Class "P" Energy Saving Rapid/Instant Start HPF, 270MA-Biax (Twin Tube) electronic ballasts, or T5 HPF, 460MA Rapid Start Electronic ballasts for 118V 60 Hz operation standard. Other electronic ballasts, other voltages and frequencies available, consult factory. (See OPTIONS).

**MOUNTING:** Installed flush with ceiling, surface, stem or cable mounted, singly or in continuous rows. For continuous mounting - knockouts are removed in end and units joined together. Adequate knockouts for stem, cable or flush surface mounting are provided. **Advise factory when stem or cable mounting.**

**FINISH:** All steel component parts are completely protected against rust and discoloration after fabrication through an automated conveyorized multi-stage phosphate bonding process. Finished interior and exterior with an electrostatic baked white polyester thermosetting powder coating. This electronic computer controlled integrated system assures consistent 88%+ reflectance efficiency and maximum durability. Reflectors powder coated exclusive matte white Tex-Tone™.

**CERTIFICATION:** The COMFORT-LUME Series 481 is U.L. and C.U.L. listed and bears the label of the I.B.E.W./AFL-CIO, Local #3. Optionally listed for Damp Location "DL".

COMFORT-LUME®, XTRALUME® and LEGION® are registered trademarks of LEGION LIGHTING CO., INC. TEX-TONE™ is a trademark of LEGION LIGHTING CO., INC.



Nom. Size	Width	Length
1' x 2'	12"	24"
1' x 4'	12"	48"

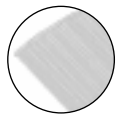


**SOFT HARMONIOUS GLARE-FREE PERFORATED SHIELD. NO DARK PROTRUSIONS BELOW CEILING**

ORDERING DATA

Nom. Size	No. and Type Lamps	Weight	Catalog No.
1' x 2'	▲ 1-F40TT/RS	20	481-1BX40 EBX
	▲ 1-F50TT/RS		481-1BX50 EBX
	▲ 1-F55TT/RS		481-1BX55 EBX
	1-F14-T5		481-114
	2-F14-T5		481-214
	1-F24HO-T5		481-124HO
	2-F24HO-T5		481-224HO
1' x 4'	▲ 2-F40TT/RS	30	481-2BX40 EBX
	▲ 2-F50TT/RS		481-2BX50 EBX
	▲ 2-F55TT/RS		481-2BX55 EBX
	1-F28-T5		481-128
	2-F28-T5		481-228
	1-F54HO-T5		481-154HO
	2-F54HO-T5		481-254HO

▲ F40TT/RS, F50TT/RS and F55TT/RS is the ANSI designation of various lamp manufacturers, i.e.: G.E. Lighting "BIAX", Philips "PL", Osram "DULUX L", Sylvania TWIN TUBE.



For a HI-TECH visual appearance, a lineal ribbed matte diffuse XTRALUME® reflector is optionally available in lieu of the standard white TEX-TONE™ reflector, add Suffix "XTALD" to catalog number and consult factory.

OPTIONS

Suffix "LT" after catalog number for cold weather ballast.  
 Suffix "EM" after catalog number for emergency battery pack, see price list for types.  
 Suffix "DL" after catalog number for damp location.  
 Suffix "XTALD" after catalog number and consult factory. For a HI-TECH visual appearance, a lineal ribbed matte diffuse XTRALUME reflector is optionally available in lieu of the standard white TEX-TONE™ reflector.

LAMP SHIELD

Perforated metal shield with white acrylic overlay is standard.

OPTIONAL LAMP SHIELD

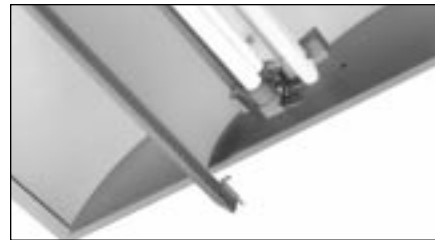
Suffix "MPF" after catalog number for perforated metal shield without white acrylic overlay.  
 Suffix "MSS" after catalog number for non-perforated solid metal shield.

ENERGY SAVING BALLASTS Where applicable (consult factory).

Suffix "ESB" after catalog number, then / and then one of the following:

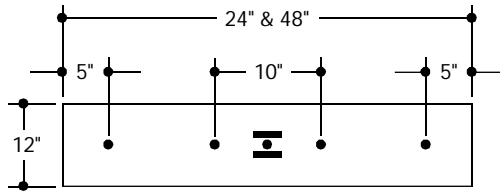
ELECTRONIC

- "EBX"-Electronic (BIAX) Twin Tube Ballast
- "EBDX"-Electronic (BIAX) Twin Tube Dimming Ballast
- "EBDP"-Electronic T5 Dimming Ballast



Easy swing down perforated shield on spring latch catches.

BACK PLANS



ADVISE FACTORY WHEN STEM OR CABLE MOUNTING

- 7/8" dia. knockout
- 2 1/2" x 3/4" dia. knockout

PHOTOMETRIC DATA - Illuminance (Footcandles)

	34.5	38.1	41.0	42.8	43.9	44.6	44.1	43.2	43.1	42.3	42.3	43.1	43.2	44.1	44.6	43.9	42.8	41.0	38.2	34.5
11'	38.2	42.4	45.5	47.7	48.9	49.1	48.7	47.5	46.6	46.1	46.1	46.6	47.5	48.7	49.1	48.9	47.7	45.6	42.5	38.3
10'	41.7	45.9	49.4	51.8	53.0	53.1	52.4	50.9	49.7	49.0	49.0	49.7	50.9	52.4	53.1	53.0	51.8	49.5	46.1	41.9
9'	44.4	49.1	53.1	55.8	57.0	56.8	55.9	54.1	52.7	51.8	51.8	52.7	54.1	55.9	56.8	57.1	55.9	53.2	49.5	44.7
8'	47.2	52.6	56.9	59.8	61.1	60.8	59.7	57.5	55.9	54.8	54.8	55.9	57.5	59.7	60.8	61.1	59.9	57.1	52.9	47.6
7'	49.5	55.2	59.8	62.8	64.1	63.7	62.5	60.2	58.3	57.2	57.2	58.3	60.2	62.5	63.7	64.2	62.9	60.0	55.6	49.9
6'	51.3	57.1	61.7	64.9	66.3	65.8	64.5	62.2	60.3	59.1	59.1	60.3	62.2	64.5	65.8	66.3	65.0	61.9	57.4	51.7
5'	53.0	58.7	63.4	66.5	68.0	67.5	66.3	63.9	62.1	60.9	60.9	62.1	63.9	66.3	67.5	68.0	66.6	63.6	59.0	53.5
4'	53.3	59.2	64.0	67.3	68.7	68.3	67.2	64.9	63.1	61.9	61.9	63.1	64.9	67.2	68.3	68.8	67.4	64.2	59.5	53.7
3'	53.6	59.7	64.5	67.8	69.2	68.9	67.8	65.5	63.7	62.6	62.6	63.7	65.5	67.8	68.9	69.3	67.9	64.7	59.9	53.9
2'	53.3	59.3	64.0	67.3	68.8	68.3	67.2	65.0	63.1	62.0	62.0	63.1	65.0	67.2	68.4	68.8	67.4	64.2	59.6	53.7
1'	53.1	58.7	63.4	66.5	68.0	67.5	66.3	64.0	62.1	60.9	60.9	62.1	64.0	66.4	67.6	68.1	66.7	63.6	59.0	53.6
1'	49.5	55.3	59.8	62.9	64.2	63.8	62.6	60.3	58.5	57.3	57.3	58.5	60.3	62.6	63.8	64.3	63.0	60.0	55.6	50.0
1'	47.2	52.7	57.0	59.9	61.2	60.9	59.8	57.5	56.0	55.0	55.0	56.0	57.5	59.8	60.9	61.3	60.0	57.2	53.0	47.7
1'	44.4	49.3	53.2	55.9	57.1	57.0	56.1	54.3	52.8	52.0	52.0	52.8	54.3	56.1	57.0	57.2	56.0	53.3	49.5	44.8
1'	41.7	46.0	49.5	51.8	53.1	53.2	52.6	51.1	49.9	49.2	49.2	49.9	51.1	52.6	53.2	53.1	51.9	49.6	46.2	42.0
1'	38.2	42.4	45.6	47.7	48.9	49.2	48.8	47.7	46.8	46.3	46.3	46.8	47.4	48.8	49.2	49.9	47.8	45.6	42.5	38.3
1'	34.5	38.1	41.0	42.8	43.9	44.5	44.1	43.4	43.2	42.5	42.5	43.2	43.4	44.1	44.5	43.9	42.8	41.0	38.2	34.6
	1'	2'	3'	4'	5'	6'	7'	8'	9'	10'	11'	12'	13'							

Catalog Number 481-2BX40

Illumination levels indicated are computed with © Lumen-Micro Version 7.5 based on the following Room Reflectance Factors:

Ceiling 80% Walls 50% Floor 20%

Room Size:

12'-0" x 14'-0" x 8'-0"

Light Loss Factor:

(LLD) x (LDD) x (BF) = 1.0

Workplane Height:

2'-6"

LTL Test Report #03186 (F40TT/RS)

3150 lumens per lamp.

Minimum fc: 35

Maximum fc: 69

Average fc: 56

Watts/ft²: 1.6

© Lumen-Micro Version 7.5 is software Copyright of Lighting Technologies, Inc.

Information supplied primarily for illustrative purposes, subject to change. Consult factory for verification and minimum quantity orders. Photometrics and/or performance summaries for your particular layout available, consult factory.

