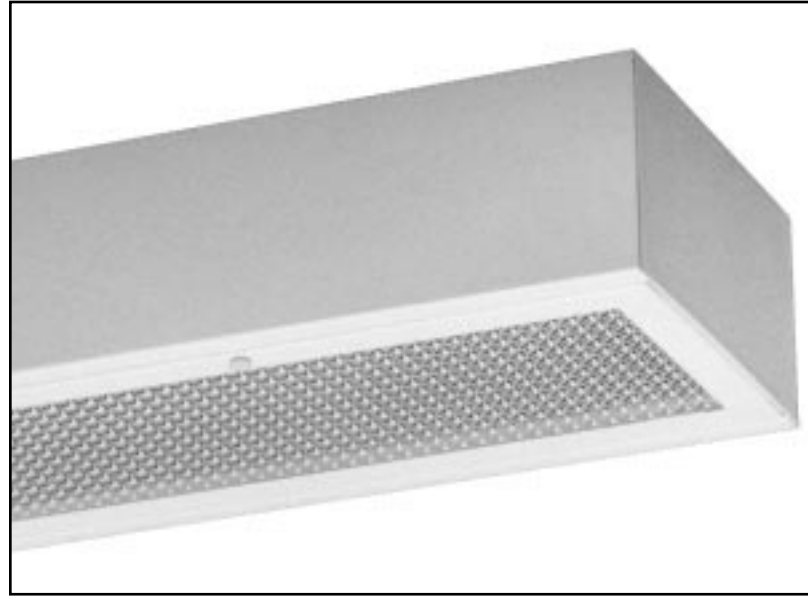


APPLICATIONS

Like all other LEGION LIGHTING products, the Series 48 is characterized by the following quality features; Engineered control for highest light output, greatest visual comfort, enduring performance, integrity and reliability. Quality components, welded construction assuring long trouble free life. Broad range of lengths and lamping configurations, provide the right light for the job. For offices, stores, schools, hospitals and public buildings.



SPECIFICATIONS

CONSTRUCTION: Die formed of 20 gauge cold rolled prime steel, rigidly fabricated, and electrically welded to insure true and perfect alignment.

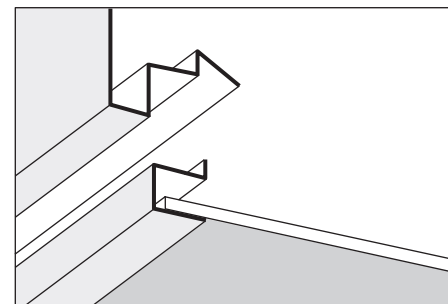
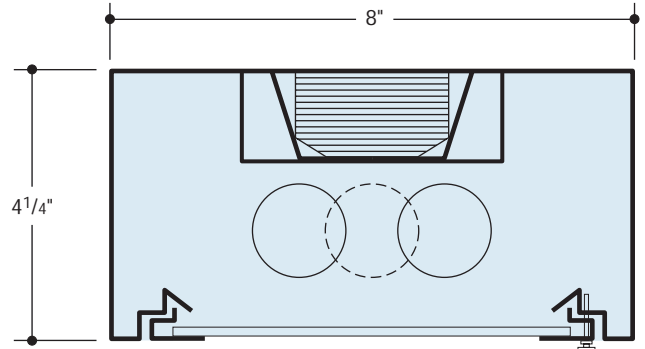
DOOR: Die formed of 18 gauge prime cold rolled steel, electrically welded throughout, with concealed weld gussets at corner joints for strength and rigidity, with exclusive "LIGHT-LOCK™" design for light tight fit to housing, hinges from either side on concealed T-slot hinges and secured in the closed position by white nylon knurled screws. Accepts flat glass, plastic or cube louvers inserted without the use of tools. (See SHIELDING MEDIA).

MOUNTING: Installed flush with ceiling, surface or stem mounted, singly or in continuous rows. For continuous mounting, knockouts are removed in end cap and units joined together. Adequate knockouts for stem or flush surface mounting are provided.

ELECTRICAL: Thermally protected Class "P" Energy Saving Rapid Start HPF 265MA-T8 electronic ballasts standard for 118V 60Hz operation. Other voltages and frequencies available, consult factory.

FINISH: All steel components parts are completely protected against rust and discoloration after fabrication through an automated conveyorized multi-stage phosphate bonding process. Finished with an electrostatic baked white polyester thermosetting powder coating. This electronic computer controlled integrated system assures consistent 88%+ reflectance efficiency and maximum durability.

CERTIFICATION: The EXCELON® Series 48 luminaire is U.L. and C.U.L. listed and bears the label of the I.B.E.W./AFL-CIO, Local #3.



Exclusive LIGHT-LOCK™ design for light tight fit of door to housing. Diffusers inserted without the use of tools.

EXCELON® and LEGION® are registered trademarks of LEGION LIGHTING CO., INC.

8/03

ORDERING DATA

Catalog No.	No. and Type Lamps	Weight	Nominal Dimensions
48-117 EBO	1-FO17-OCT-T8	15	8" x 24"
48-217 EBO	2-FO17-OCT-T8		
• 48-1BX40 • 48-2BX40	• 1-*F40TT/RS • 2-*F40TT/RS		
48-132 EBO	1-FO32-OCT-T8	23	8" x 48"
48-232 EBO	2-FO32-OCT-T8		
48-132-8T EBO	2-FO32-OCT-T8	46	8" x 96"
48-232-8T EBO	4-FO32-OCT-T8		

* F50TT/RR is the ANSI designation of various lamp manufacturers, i.e. G.E. Lighting "BIA", Phillips "PL", Osram "Dulux L", Sylvania TWIN TUBE.
 • For F50TT/RS lamp, change cat. number. Example: **48-1BX50** etc. and CONSULT FACTORY.

OPTIONS

Suffix "DIM" after catalog no. for dimming ballast.
 Suffix "LT" after catalog no. for cold weather ballast.
 Suffix "EM" after cat. no. for emerg. battery pack, see price list for types.
 Suffix "DL" after catalog no. for damp location.
 Suffix "GASK" after catalog no. for gasketed door and lens.
 Suffix "TP" after catalog no. for tamper proof screws on door

ENERGY SAVING BALLASTS Where applicable (consult factory).
 Suffix "ESB" after catalog number, then / and one of the following:

- | | |
|-------------------------|--------------------------------------|
| MAGNETIC | ELECTRONIC |
| "OCT"-Octron T8 Ballast | "EB"-Electronic T12 Ballast |
| | "EBO"-Electronic T8 Octron Ballast |
| | "EBDO"-Electronic T8 Dimming Ballast |

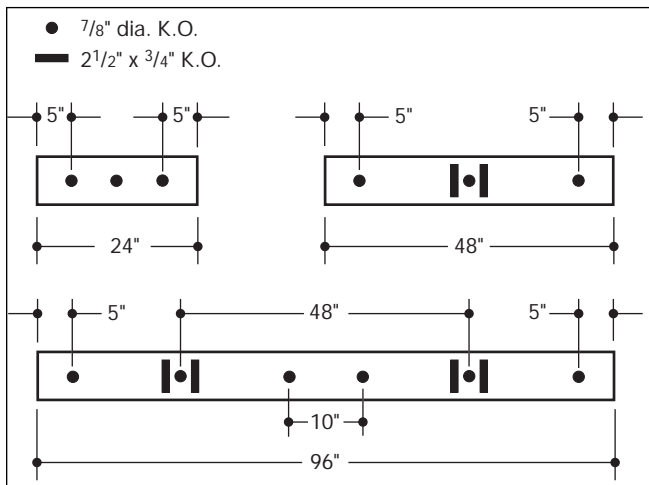
SHIELDING MEDIA

- Type (AL) 1/2" cube aluminum louver - white.
- Type (PL) 1/2" cube styrene louver - white.
- Type (PLA) 1/2" cube acrylic louver - white.
- Type (PAF) 5/8" cube Paraflex specular silver louver - styrene.
- Type (PAFA) 5/8" cube Paraflex specular silver louver - acrylic.
- Type (PW) 1/2" cube Parawedge specular silver louver - styrene.
- Type (PWA) 1/2" cube Parawedge specular silver louver - acrylic.
- Type (PAFIVA) 3/4" x 3/4" x 1/2" deep Paraflex specular silver louver - acrylic.
- Type (PL3A) 3/4" x 3/4" x 1/2" deep high efficiency specular silver louver - acrylic.
- Type (PL5A) 3/4" x 3/4" x 3/8" deep high efficiency specular silver louver - acrylic.
- Type (RFA) acrylic plastic refractor.
- Type (RFL) polycarbonate Lexan® refractor.
- Type (ACR) KSH K12 acri-tuf prismatic refractor.
- Type (K19A) KSH K19 acrylic lens.
- Type (FA) flat white acrylic.
- Type (GRA) glass fiber - reinforced acrylic.
- Type (C70) Corning #70 lens - glass.
- Type (C73) Corning #73 lens - glass.
- Type (AIM) American injection molded acrylic.
- Type (K15A) 3/16" thick acrylic plastic refractor.
- Type (K20A) KSH K20 acrylic lens.
- Type (K11A) louvered prismatic acrylic panel.
- Type (RFI) Radio frequency lens.
- Type (K3E) KSH K3E acrylic lens.
- Type (HO6244) Holophane 6244 Controlens®.
- Type (HO6251) Holophane 6251 Controlens®.
- Type (HO8224) Holophane 8224 refractive grid®.
- Type (HO8246) Holophane 8246 refractive grid® with overlay.
- Type (PH) Parahex specular silver louver.

• CONSULT FACTORY FOR MINIMUM QUANTITY ORDERS AND AVAILABILITY.
 Select the diffuser required and add suffix to cat. number.
 Example: **48-232-RFA EBO**.

Lexan® is a registered trademark of General Electric Co.

BACK PLANS



Information supplied primarily for illustrative purposes, subject to change. Consult factory for verification and minimum quantity orders.