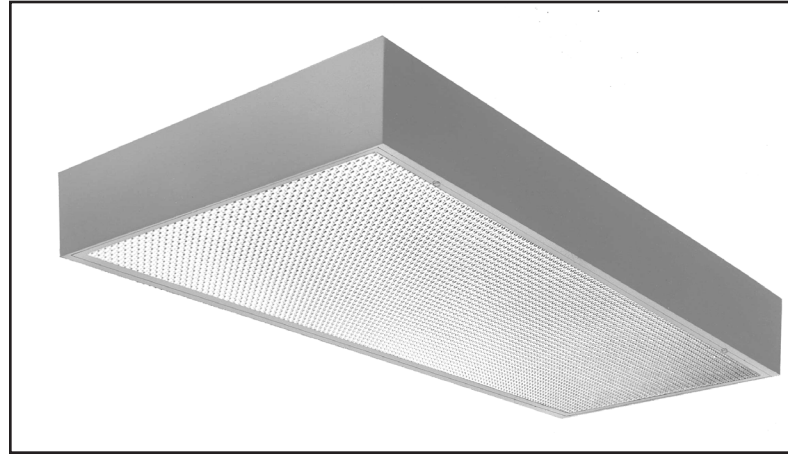


APPLICATIONS

Like all other LEGION LIGHTING products, the Series 46 is characterized by the following quality features; Engineered control for highest light output, greatest visual comfort, enduring performance, integrity and reliability. Quality components, welded construction assuring long trouble free life. Broad range of lengths and lamping configurations, provide the right light for the job. For offices, stores, schools, hospitals and public buildings.



SPECIFICATIONS

CONSTRUCTION: Die formed of code gauge steel, rigidly fabricated, and electrically welded to insure true and perfect alignment.

SOCKET PLATE/REFLECTOR: Die formed of code gauge steel, socket plate securely mounted to housing. Reflector formed to optically correct contour to provide maximum efficiency, removable to access wiring. XTA-XTRALUME® energy efficient reflector available (see OPTIONS).

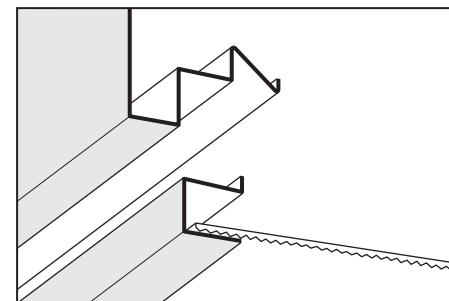
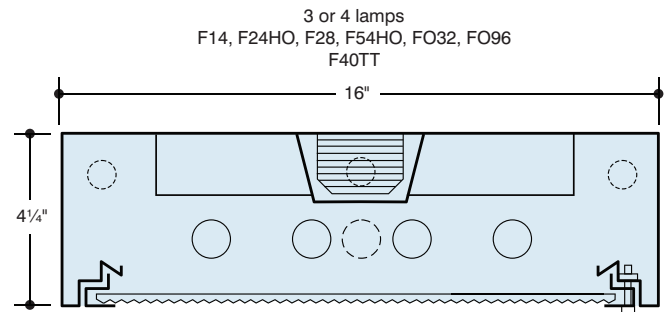
DOOR: Die formed of 18 gauge cold rolled steel, electrically welded throughout, with concealed weld gussets at corner joints for strength and rigidity, with exclusive LIGHT-LOCK™ design for light tight fit to housing. Door hinges from either side on concealed T-slot hinges and is secured in the closed position by white nylon knurled screws. Insertion or removal of diffusing element (see SHIELDING MEDIA) is performed without the use of tools or disassembly of door.

ELECTRICAL: 1 and 2 lamp T5 electronic program start 450MA for 14W, 28W and 460MA to 300MA for 24W and 54W T5HO, or 1, 2 and 3 lamp Octic T8 265MA electronic instant start ballasts, or Rapid Start HPF 270MA Biax lamps. High power factor, Class A sound rated <10% THD (less than 10% Total Harmonic Distortion). U.L., CSA, FCC listed Type 1 for multi-voltage 120/277 50/60Hz operation. Other voltages and frequencies available, CONSULT FACTORY.

MOUNTING: Installed flush with ceiling, surface or stem mounted, singly or in continuous rows. For continuous mounting, knockouts are removed in end cap and units joined together. Adequate knockouts for stem or flush surface mounting are provided.

FINISH: All steel components parts are completely protected against rust and discoloration after fabrication through an automated conveyorized multi-stage phosphate bonding process. Finished with an electrostatic baked white polyester thermosetting powder coating. This electronic computer controlled integrated system assures consistent 88%+ reflectance efficiency and maximum durability.

CERTIFICATION: The EXCELON® Series 46 luminaire is U.L. and C.U.L. listed and bears the label of the I.B.E.W./AFL-CIO, Local #3. Optionally listed for damp locations "DL".



Exclusive LIGHT-LOCK™ design for light tight fit of door to housing. Diffusers inserted without the use of tools.

EXCELON® and LEGION® are registered trademarks of LEGION LIGHTING CO., INC. LIGHT-LOCK™ is a trademark of LEGION LIGHTING CO., INC.



ORDERING DATA

	Catalog No.	No. and Type Lamps	Nominal Dimensions	Weight
T5 LAMPS	46-314	3-F14-T5	16" x 24"	23
	46-324HO	3-F24HO-T5		
	46-328	3-F28-T5		
	16" x 48"	46-354HO	3-F54HO-T5	35
		46-428	4-F28-T5	
		46-454HO	4-F54HO-T5	
		46-328-8T	6-F28-T5	
		46-354HO-8T	6-F54HO-T5	
	16" x 96"	46-428-8T	8-F28-T5	72
46-454HO-8T		8-F54HO-T5		
			68	
T8 LAMPS	46-317 EBO	3-FO17-OCT-T8	16" x 24"	23
	46-417 EBO	4-FO17-OCT-T8	16" x 48"	35
	46-332 EBO	3-FO32-OCT-T8		
	46-432 EBO	4-FO32-OCT-T8	16" x 96"	72
	46-396SL EBO	3-FO96-OCT-T8		68
	46-496SL EBO	4-FO96-OCT-T8		72
	46-332-8T EBO	6-FO32-OCT-T8		68
46-432-8T EBO	8-FO32-OCT-T8			
BX	46-3BX40	* 3-FO40TT/RS	16" x 24"	23
	46-4BX40	* 4-FO40TT/RS		

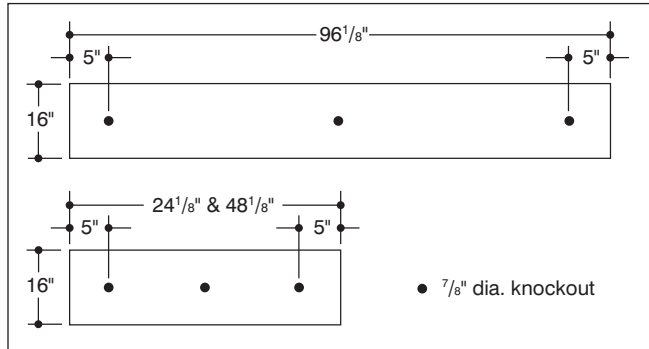
* F50TT/RR is the ANSI designation of various lamp manufacturers, i.e. G.E. Lighting "BIAX", Phillips "PL", Osram "DULUX-L", Sylvania TWIN TUBE. For F50TT/RS lamp, change catalog number. Example: **46-3BX50** etc. and consult factory. For F55TT/RS lamps consult factory. **Two lamp units available, consult factory.**

NOTE: T12 and SLIMLINE lamps available, CONSULT FACTORY.

MATCHING 3' AND 6' UNITS AVAILABLE. CONSULT FACTORY FOR MINIMUM QUANTITY ORDER AND AVAILABILITY.

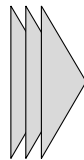
OCTRON™ is a registered trademark of SYLVANIA
LEXAN® is a registered trademark of General Electric Co.

BACK PLANS



- CONSULT FACTORY FOR MINIMUM QUANTITY ORDERS AND AVAILABILITY. Select the diffuser required and add suffix to catalog number. Example: **46-432-RFA**.

CONSULT FACTORY FOR AVAILABILITY ON "AP" ALUMINUM PARABOLIC LOUVERS.



•••••
For Photometric Data - CONSULT FACTORY

OPTIONS

- Suffix "LT" after catalog no. for cold weather ballast.
- Suffix "EM" after catalog no. for emergency battery pack, see price list for types and consult factory.
- Suffix "DL" after catalog no. for damp location.
- Suffix "GASK" after catalog no. for gasketed door and lens.
- Suffix "TP" after catalog no. for tamperproof screws on door.
- Suffix "XTA" after catalog no. for XTRALUME® reflector standard with 85% reflectance, for 95% reflectance please specify your requirements.
- Suffix "MTS" after catalog no. for metal thumb screws.

OPTIONAL REFLECTORS

- Suffix "XTA" after catalog no. for XTRALUME® reflector standard with 85% reflectance, for 95% reflectance please specify your requirements, and consult factory.
- Suffix "XTALD" after catalog no. for linear ribbed matted diffuser, and consult factory.
- Suffix "WO" after catalog no. for white optics, and consult factory.

DIMMING BALLASTS

- Suffix "EBDO" after catalog no. for T8 dimming ballast.
- Suffix "EBDP" after catalog no. for T5 dimming ballast.
- Suffix "EBDX" after catalog no. for BIAX Twin-Tube dimming ballast.
- Suffix "EBDOA" after catalog no. for electronic dimming ballast ADVANCE MARK X.
- Suffix "ECO-10" after catalog no. for electronic dimming ballast LUTRON ECO-10.
- Suffix "HIL" after catalog no. for LUTRON HI-LUME dimming ballast.
- Suffix "H3D" after catalog no. for LUTRON HI-LUME 3D dimming ballast.
- Suffix "ECO-5" after catalog no. for LUTRON ECO SYSTEM.

ELECTRONIC BALLASTS

- "EBO"- Electronic T8 Octron ballast.
- "EBX"- Electronic (BIAX) Twin-Tube ballast.
- Electronic T5/T5HO ballast

OTHER DIMMING AND PROGRAM START BALLASTS ARE AVAILABLE, CONSULT FACTORY.

Legion is a Lutron® Silver Partner

Lutron® is a registered trademark of Lutron Electronics

SHIELDING MEDIA

- Type (AL) 1/2" cube aluminum louver - white.
- Type (PL) 1/2" cube styrene louver - white.
- Type (PLA) 1/2" cube acrylic louver - white.
- Type (PAF) 5/8" cube Paraflex specular silver louver - styrene.
- Type (PAFA) 5/8" cube Paraflex specular silver louver - acrylic.
- Type (PW) 1/2" cube Parawedge specular silver louver - styrene.
- Type (PWA) 1/2" cube Parawedge specular silver louver - acrylic.
- Type (PAFIVA) 3/4"x3/4"x1/2" deep Paraflex specular silver louver-acrylic.
- Type (PL3A) 3/4"x3/4"x1/2" deep high efficiency specular silver louver - acrylic.
- Type (PL5A) 3/4"x3/4"x3/8" deep high efficiency specular silver louver - acrylic.
- Type (RFA) acrylic plastic refractor, Pattern 12.
- Type (RFL) polycarbonate Lexan® refractor.
- Type (ACR) KSH K12 acri-tuf prismatic refractor.
- Type (K19A) KSH K19 acrylic lens.
- Type (FA) flat white acrylic.
- Type (GRA) glass fiber - reinforced acrylic.
- Type (C70) Corning #70 lens - glass.
- Type (C73) Corning #73 lens - glass.
- Type (K15A) 3/16" thick acrylic plastic refractor.
- Type (K20A) KSH K20 acrylic lens.
- Type (RFI) Radio frequency lens.
- Type (K3E) KSH K3E acrylic lens.
- Type (PH) Parahex specular silver louver.
- Type (DA) Dished white acrylic.
- Type (DAP) Dished acrylic clear prismatic.

• CONSULT FACTORY FOR MINIMUM QUANTITY ORDER AND AVAILABILITY. Select the diffuser required and add suffix to cat. no. EXAMPLE: **46-428-RFA**

Information supplied primarily for illustrative purposes, subject to change.
Consult factory for verification and minimum quantity orders.

