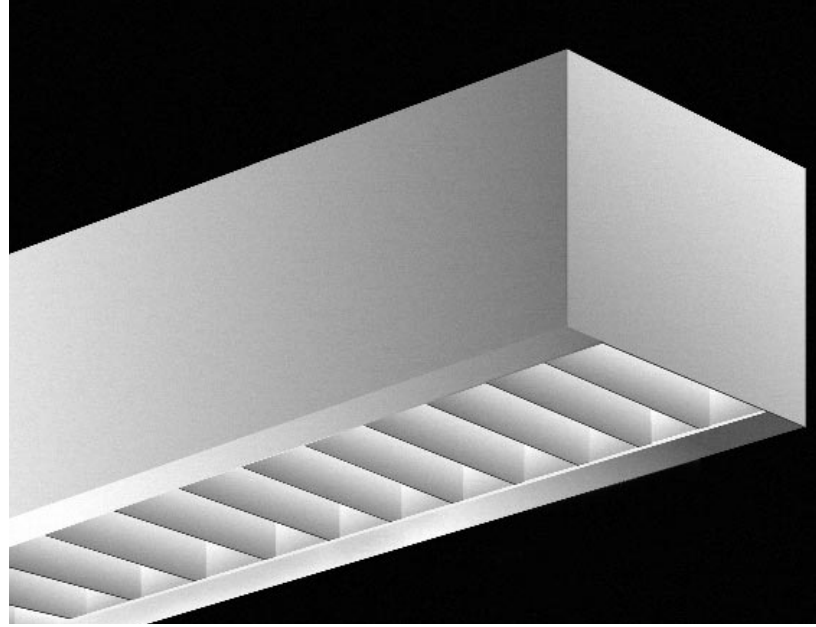


## APPLICATIONS

The MINI-MOD-U-BEAM® Series offers a small unobtrusive silhouette. This small silhouette along with T8 OCTIC lamps provides the specifier with a compact high lumen output, high efficiency, energy saving unit. Available in a vast assortment of lengths, diffusers and lamping configurations, with impressive color rendering availability.

Quality components, welded construction, post powder coated finish, assuring a long trouble free life.



## SPECIFICATIONS

**CONSTRUCTION:** Die formed of 20 gauge cold rolled prime steel, rigidly fabricated, and electrically welded to insure true and perfect alignment.

**DIFFUSER:** Tip-Tilt diffuser for removal, relamping and servicing. Refer to Shielding Media for types available.

**SOCKET PLATES:** Die formed of code gauge steel and mounted securely to fixture housing and readily removable for socket maintenance.

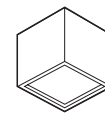
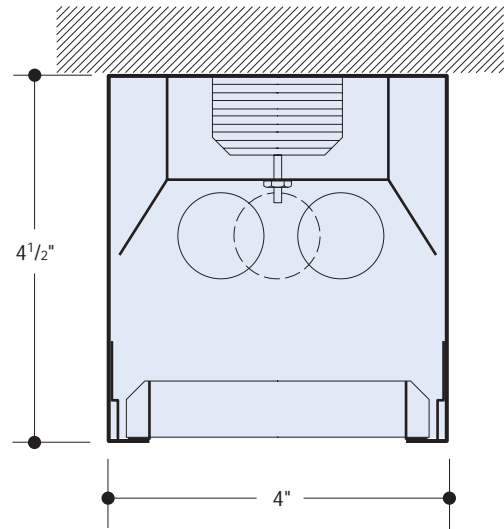
**REFLECTOR:** Die formed of code gauge steel and securely mounted to fixture housing. CAD/CAM designed to optically correct contour to provide precise light distribution with maximum efficiency, removable to access wiring. XTA-XTRALUME® energy efficient reflector available (see Options).

**ELECTRICAL:** 1, 2 and/or \*4 lamp Octic T8, 265MA Electronic High Power Factor, Class A sound rated, <10% THD (less than 10% Total Harmonic Distortion) U.L. listed Type 1 for 118 Volt 60 Hz operation. Other voltages and frequencies available. CONSULT FACTORY. \*(Subject to manufacturers availability).

**FINISH:** All steel component parts are completely protected against rust and discoloration after fabrication through an automated conveyorized multi-stage phosphate bonding process. Finished with an electrostatic baked white polyester thermosetting powder coating. This electronic computer controlled integrated system assures consistent 88%+ reflectance efficiency and maximum durability. Other colors available, see color chart and CONSULT FACTORY.

**MOUNTING:** Installed flush with ceiling surface, cable or stem mounted, singly or in continuous rows. For continuous mounting, knockouts are removed in end cap and units joined together.

**CERTIFICATION:** The Mini-Mod-U-Beam® Series 444 luminaire is U.L. and C.U.L. listed and bears the label of the I.B.E.W./AFL-CIO, Local #3.



MATCHING  
CORNER BOX  
4" x 4" x 4 1/2"  
444-CB

MINI-MOD-U-BEAM®, XTRALUME® and LEGION® are registered trademarks of LEGION LIGHTING CO, INC.

ORDERING DATA

Catalog No.	No. and Type Lamps	Width	Length
444-117 EBO	1-FO17-OCT-T8	4"	24"
444-217 EBO	2-FO17-OCT-T8		
444-125 EBO	1-FO25-OCT-T8	4"	36"
444-225 EBO	2-FO25-OCT-T8		
444-132 EBO	1-FO32-OCT-T8	4"	48"
444-232 EBO	2-FO32-OCT-T8		
444-160 EBO	1-FO40-OCT-T8	4"	60"
444-260 EBO	2-FO40-OCT-T8		
444-125-6T EBO	2-FO25-OCT-T8	4"	72"
444-225-6T EBO	4-FO25-OCT-T8		
444-132-8T EBO	2-FO32-OCT-T8	4"	96"
444-232-8T EBO	4-FO32-OCT-T8		
444-CB, Corner Box	NONE	4"	4"

EXTENSION BOXES: For Corner Box, Extensions, Fillers and Angles CONSULT FACTORY.

PHOTOMETRICS — CONSULT FACTORY

OPTIONS

Suffix "DIM" after catalog no. for dimming ballast.  
 Suffix "LT" after catalog no. for cold weather ballast.  
 Suffix "EM" after cat. no. for emerg. battery pack, see price list for types.  
 Suffix "DL" after catalog no. for damp location.  
 Suffix "XTA" after catalog no. for XTRALUME® reflector std. with 85% reflectance, for 95% reflectance please specify your requirements.

ENERGY SAVING BALLASTS Where applicable (consult factory).

Suffix "ESB" after catalog number, then / and one of the following:

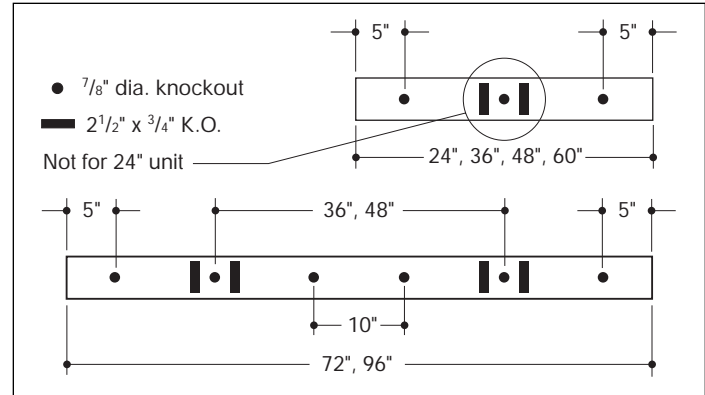
ELECTRONIC

"EBDO"-Electronic T8 Dimming Ballast

SHIELDING MEDIA

- Type (LB) 3/4" x 3/4" - 45° cutoff - lateral blade louver - white.
- Type (LBP) 3/4" x 3/4" - 45° cutoff - perforated lateral blade louver - white.
- Type (AL) 1/2" cube aluminum louver - white.
- Type (PLA) 1/2" cube acrylic louver - white.
- Type (PAFA) 5/8" cube Paraflex specular silver louver - acrylic.
- Type (PWA) 1/2" cube Parawedge spec. silver louver - acrylic.
- Type (PAFIVA) 3/4" x 3/4" x 1/2" deep Paraflex specular silver louver - acrylic.
- Type (PL3A) 3/4" x 3/4" x 1/2" deep high efficiency spec. silver louver - acrylic.
- Type (PL5A) 3/4" x 3/4" x 1/2" deep high efficiency spec. silver louver - acrylic.
- Type (RFA) acrylic plastic refractor.
- Type (K19A) KSH K19 acrylic lens.
- Type (FA) flat white acrylic.
- Type (GRA) glass fiber - reinforced acrylic.

BACK PLANS



Information supplied primarily for illustrative purposes, subject to change. Consult factory for verification and minimum quantity orders.

PENDANT OPTIONS

