

APPLICATIONS

The essential function of a lighting unit is to provide effective illumination. We believe that proper lighting creates a harmonious blending of this functional and decorative atmosphere. Versatility provides the solution to any performance or budget requirements for offices, stores, schools, residences and public buildings.



SPECIFICATIONS

CONSTRUCTION: Die formed of code gauge steel, rigidly fabricated, and electrically welded to insure true and perfect alignment.

MOUNTING: Installed flush with ceiling surface or stem mounted, singly or in continuous rows. For continuous mounting, end knockouts may be removed and units joined together. Adequate knockouts and holes are provided for mounting and feeds.

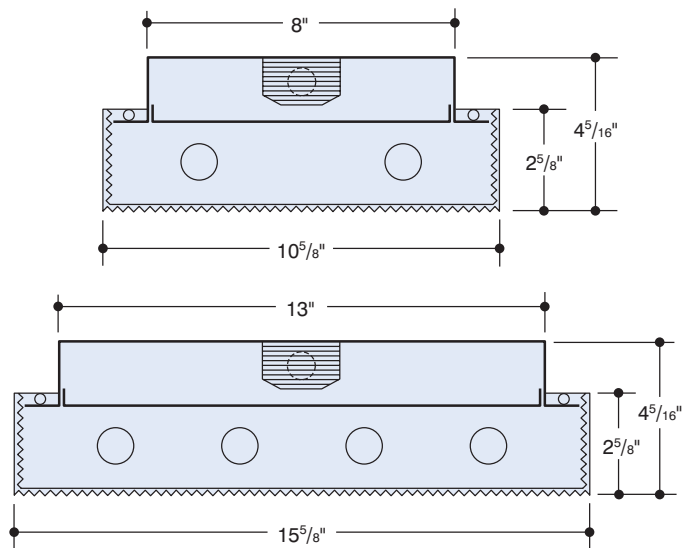
ELECTRICAL: 1 and 2 lamp T5 electronic program start 450MA for 14W, 28W and 460MA to 300MA for 24W and 54W T5HO, or 1, 2, 3 and 4 lamp Octic T8 265MA electronic instant start ballasts. High power factor, Class A sound rated < 10% THD (less than 10% Total Harmonic Distortion). U.L., CSA, FCC listed Type 1 for multi-voltage 120/277 50/60Hz operation. Other voltages and frequencies available, CONSULT FACTORY.

SHIELDING: One piece heavy gauge precision extruded, clear acrylic prismatic refractor with permanently attached injection molded ends of high impact plastic. The sidewalls have a continuous set of horizontal elevating prisms on the inside. The optically engineered bottom has rows of 3/16" square base female conical prisms set in a diagonal pattern providing maximum lamp concealment, high efficiency, low surface brightness and a defined cutoff above the 45° angle. Lens assembly is secured to fixture chassis by four spring loaded sliding hinge pins (one at each corner) which engage non breakable pockets molded into the inner surface of the end caps. Hinges from either side for ease of installation and maintenance.

FINISH: All steel component parts are completely protected against rust and discoloration after fabrication through an automated conveyorized multi-stage phosphate bonding process. Finished with an electrostatic baked white polyester thermosetting powder coating. This electronic computer controlled integrated system assures consistent 88%+ reflectance efficiency and maximum durability. Exterior finished standard white powder coat. Exterior optionally available finished black powder coat (see Options listing).

CERTIFICATION: The Series 3911 and 3916 are U.L. and C.U.L. listed and bear the label of the I.B.E.W./AFL-CIO, Local #3.

LEGION® is a registered trademark of LEGION LIGHTING CO., INC.



Information supplied primarily for illustrative purposes, subject to change. Consult factory for verification and minimum quantity orders.



ORDERING DATA

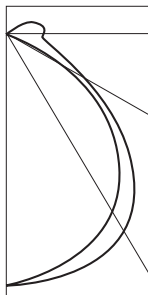
	Catalog No.	No. and Type Lamps	Nominal Dimensions	Weight	
NARROW	3911-228-ACP	2-F28-T5	10 ⁵ / ₈ " x 48 ⁵ / ₈ "	18	
	3911-254HO-ACP	2-F54HO-T5			
	3911-232-ACP EBO	2-FO32-OCT-T8			
	3911-328-ACP	3-F28-T5			
	3911-354HO-ACP	3-F54HO-T5	10 ⁵ / ₈ " x 97 ¹ / ₄ "	23	
	3911-332-ACP EBO	3-FO32-OCT-T8			
	3911-228-8T-ACP	4-F28-T5			
	3911-254HO-8T-ACP	4-F54HO-T5			
	3911-232-8T-ACP EBO	4-FO32-OCT-T8	10 ⁵ / ₈ " x 97 ¹ / ₄ "	35	
	3911-328-8T-ACP	6-F28-T5			
	3911-354HO-8T-ACP	6-F54HO-T5			
	3911-332-8T-ACP EBO	6-FO32-OCT-T8			
	3911-428-8T-ACP	8-F28-T5	10 ⁵ / ₈ " x 24 ⁵ / ₈ "	10	
	3911-454HO-8T-ACP	8-F54HO-T5			
● 3911-1BX40-ACP	★ 1-F40TT/RS				
● 3911-2BX40-ACP	★ 2-F40TT/RS				
WIDE	3916-228-ACP	2-F28-T5	15 ⁵ / ₈ " x 48 ⁵ / ₈ "	21	
	3916-254HO-ACP	2-F54HO-T5			
	3916-232-ACP EBO	2-FO32-OCT-T8			
	3916-328-ACP	3-F28-T5			
	3916-354HO-ACP	3-F54HO-T5	15 ⁵ / ₈ " x 48 ⁵ / ₈ "	26	
	3916-332-ACP EBO	3-FO32-OCT-T8			
	3916-428-ACP	4-F28-T5			
	3916-454HO-ACP	4-F54HO-T5			
	3916-432-ACP EBO	4-FO32-OCT-T8	15 ⁵ / ₈ " x 97 ¹ / ₄ "	51	
	3916-328-8T-ACP	6-F28-T5			
	3916-354HO-8T-ACP	6-F54HO-T5			
	3916-332-8T-ACP EBO	6-FO32-OCT-T8			
	3916-428-8T-ACP	8-F28-T5	15 ⁵ / ₈ " x 97 ¹ / ₄ "	52	
	3916-454HO-8T-ACP	8-F54HO-T5			
	3916-432-8T-ACP EBO	8-FO32-OCT-T8			
	● 3916-2BX40-ACP	★ 2-F40TT/RS			
	● 3916-3BX40-ACP	★ 3-F40TT/RS	15 ⁵ / ₈ " x 24 ⁵ / ₈ "	12	
				13	

● Consul factory for availability and minimum quantity order.
 ★ F40TT/RS is the ANSI designation of various lamp manufacturers, i.e. G.E. Lighting "Biax", Philips "PL", Osram "DULUX-L", Sylvania "Twin-Tube". For F50TT/RS change catalog no. Example: 3911-2BX50.

OCTRON™ is a registered trademark of SYLVANIA.
 BIAX™ is a trademark of General Electric Co.

PHOTOMETRICS

Cat. No. 3911 (2) FO32/T8/CW/RS 2950 Lumens each



Floor	20%											
	80%			70%			50%			10%		
Ceiling	70%	50%	30%	70%	50%	30%	50%	30%	10%	50%	30%	10%
ZONAL CAVITY METHOD												
1	.70	.67	.64	.63	.61	.59	.59	.57	.55	.54	.53	.52
2	.62	.58	.54	.56	.54	.50	.52	.50	.47	.49	.47	.45
3	.55	.50	.46	.50	.46	.43	.47	.44	.41	.44	.41	.39
4	.49	.44	.39	.45	.41	.37	.42	.38	.35	.39	.36	.33
5	.44	.38	.34	.40	.35	.32	.37	.34	.31	.35	.32	.29
6	.39	.34	.29	.37	.31	.27	.34	.30	.27	.32	.28	.25
7	.35	.30	.25	.32	.28	.24	.30	.26	.23	.28	.25	.22
8	.31	.29	.22	.29	.24	.21	.27	.23	.20	.26	.22	.20
9	.28	.23	.19	.26	.22	.18	.24	.20	.17	.23	.20	.17
10	.26	.21	.16	.23	.19	.16	.22	.18	.14	.21	.18	.15

Cat. No. 3916 (4) FO32/T8/CW/RS 2950 Lumens each



Floor	20%											
	80%			70%			50%			10%		
Ceiling	70%	50%	30%	70%	50%	30%	50%	30%	10%	50%	30%	10%
ZONAL CAVITY METHOD												
1	.65	.62	.60	.59	.57	.56	.56	.54	.53	.53	.52	.51
2	.58	.54	.50	.53	.50	.47	.50	.48	.45	.47	.45	.44
3	.51	.47	.43	.47	.44	.40	.45	.42	.39	.43	.40	.38
4	.46	.41	.37	.42	.38	.35	.40	.37	.34	.38	.35	.33
5	.41	.35	.31	.38	.33	.30	.36	.32	.29	.34	.31	.28
6	.37	.31	.28	.34	.30	.26	.33	.29	.25	.31	.28	.25
7	.33	.28	.24	.31	.26	.23	.29	.25	.22	.28	.24	.22
8	.30	.24	.21	.28	.23	.20	.26	.23	.20	.25	.22	.19
9	.27	.21	.18	.25	.20	.17	.24	.20	.17	.23	.19	.16
10	.24	.19	.16	.23	.18	.15	.22	.18	.15	.21	.18	.14

OPTIONS

Suffix "DIM" after catalog no. for dimming ballast.
 Suffix "LT" after catalog no. for cold weather ballast.
 Suffix "EM" after cat. no. for emergency battery pack, see price list for types.
 Suffix "DL" after catalog no. for damp location.
 Suffix "BLK" after catalog no. for black powder finish exterior housing.

DIMMING BALLASTS

Suffix "EBDO" after catalog no. for T8 dimming ballast.
 Suffix "EBDP" after catalog no. for T5 dimming ballast.
 Suffix "EBDX" after catalog no. for BIAX Twin-Tube dimming ballast.
 Suffix "EBDOA" after catalog no. for electronic dimming ballast ADVANCE MARK X.
 Suffix "ECO-10" after catalog no. for electronic dimming ballast LUTRON ECO-10.
 Suffix "HIL" after catalog no. for LUTRON HI-LUME dimming ballast.
 Suffix "H3D" after cat. no. for LUTRON HI-LUME 3D dimming ballast.
 Suffix "ECO-5" after catalog no. for LUTRON ECO SYSTEM.

ELECTRONIC BALLASTS

"EBO"- Electronic T8 Octron ballast.
 "EBX"- Electronic (BIAX) Twin-Tube ballast.
 Electronic T5/T5HO ballast

OTHER DIMMING AND PROGRAM START BALLASTS ARE AVAILABLE. CONSULT FACTORY.

Legion is a Lutron® Silver Partner

Lutron® is a registered trademark of Lutron Electronics

