

APPLICATIONS

Legion's My-T-Lite 312 series is the ideal selection for limited space areas such as closets, display and trophy cases, over work benches, under-cabinets, over desks, bank and ticket counters and wall lighting in stair wells.

Fits anywhere, a high quality specification grade fluorescent luminaire formed of heavy gauge steel.

The choice of designers, and specifiers for ease of installation and maintenance.

Available in various sizes and wattages.



SPECIFICATIONS

CONSTRUCTION: Die formed of heavy gauge steel, rigidly fabricated to insure true and perfect alignment.

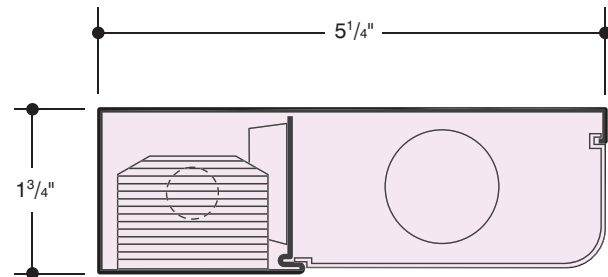
MOUNTING: All My-T-Lite fluorescents can be mounted individually or in continuous rows, knockouts provided at both ends for feed-thru and entry.

ELECTRICAL: Thermally protected class "P" Energy Saving Rapid Start HPF 265MA-T8, 430MA-T12, Trigger Start LPF magnetic ballasts for 118V 60Hz operation standard. Optional electronic ballasts, other voltages and frequencies available, (see Options). Grounded convenience outlet included with fixture (not installed). All electrical components mounted on wiring channel for ease of installation and servicing.

SHIELDING: Ribbed translucent white acrylic wrap around plastic diffuser standard, destaticized and flexible, easily snaps in and out for relamping.

FINISH: All steel component parts are completely protected against rust and discoloration by an Anchoring Process and coated with 365° high quality sprayed baked white synthetic enamel for maximum durability, providing a high reflective efficiency.

CERTIFICATION: The Series 312 is U.L. listed and bears the label of the I.B.E.W./AFL-CIO.



MY-T-LITE™ is a trademark of LEGION LIGHTING CO., INC.

ORDERING DATA

Catalog No.	No. and Type Lamps	Nominal Length	Wt.
312-114L-ACW	1-14W-TS-T12	15"	5
312-115L-ACW	1-15W-TS-T12	18"	6
312-120L-ACW	1-20W-TS-T12	24"	7
312-117-ACW EBO	1-FO17-OCT-T8		
312-130L-ACW	1-30W-RS-T12	36"	9
★ 312-125-ACW EBO	1-FO25-OCT-T8		
312-140L-ACW	1-40W-RS-T12	48"	10
312-140H-ACW	1-40W-RS-T12		12
★ 312-132-ACW EBO	1-FO32-OCT-T8		

OCTRON™ is a registered trademark of SYLVANIA

OPTIONS

Suffix "RSW" after catalog no. for Positive Position Rocker Switch.
 Suffix "GCO" after catalog no. for Grounded Convenience Outlet.
 Suffix "CP" after cat. no. for 6 ft. cord and plug.
 Suffix "FB" after catalog no. for Fuse and Fuseholder.
 Suffix "DIM" after catalog no. for Dimming Ballast.
 Suffix "LT" after catalog no. for Cold Weather Ballast
 Suffix "DL" after catalog no. for Damp Location.

ENERGY SAVING BALLASTS Where applicable (consult factory).
 Suffix "ESB"/ after catalog number, and then one of the following:

MAGNETIC

"SLH"-Super Low Heat T12 Ballast
 "MMI"-Maxi-Miser I T12 Ballast
 "PRE"-Premium III T12Ballast
 "OCT"-Octron T8 Ballast
 "OPT"-Optimizer Ballast
 "DIM"-Magnetic T12 Dimming Ballast

ELECTRONIC

"EB"-Electronic T12 Ballast
 ★ "EBO"-Electronic T8 Octron Ballast
 "EBD"-Electronic T12 Dimming Ballast
 "EBDO"-Electronic T8 Dimming Ballast

HYBRID

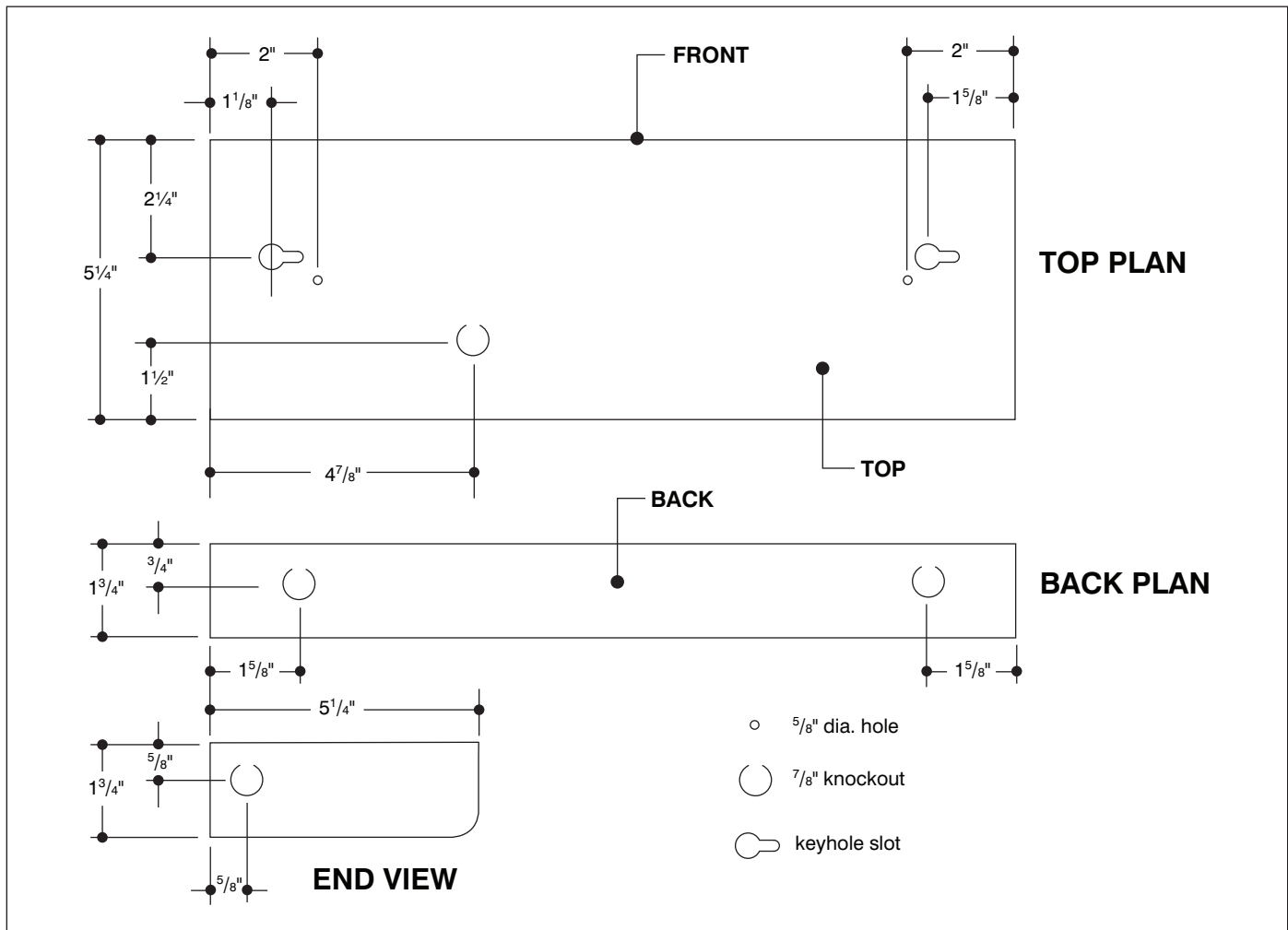
"HB"-Hybrid ESB T12 Ballast
 "HBO"-Hybrid ESB T8 Octron Ballast

★ "As a Energy Star® Partner, Legion Lighting Co., Inc. has determined that the My-T-Lite Tasklites Starred ★ meets the Energy Star® guidelines for energy efficiency. Please consult factory for specific information."



Energy Star® and Logo are registered trademarks of the U.S. Govt. and EPA.

BACK PLANS



Information supplied primarily for illustrative purposes, subject to change.
 Consult factory for verification and minimum quantity orders. Photometrics and/or performance summaries for your particular layout available, consult factory.

