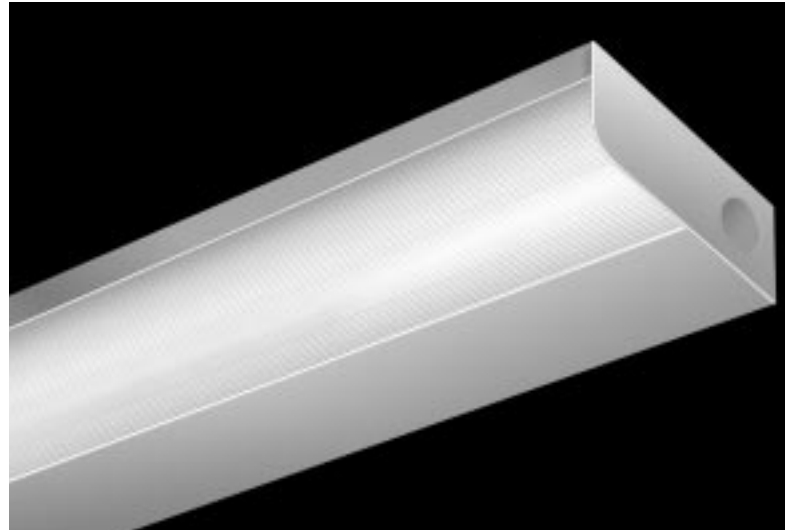


APPLICATIONS

Legion's shallow MINI-MY-T-LITE™ Series 311 utilizes the new energy efficient high-lumen output T5 lamps. A high quality, ultra thin and narrow profile specification grade fluorescent luminaire formed of heavy gauge steel, with concealed ballast mounting screws. The low key silhouette design fits virtually anywhere, blending unobtrusively with any decor.

The choice of designers, and specifiers for homes, schools, banks, offices, hospitals etc.

Available in various sizes and wattages. Easily installed and maintained.



SPECIFICATIONS

CONSTRUCTION: Die formed of heavy gauge steel, rigidly fabricated to insure true and perfect alignment.

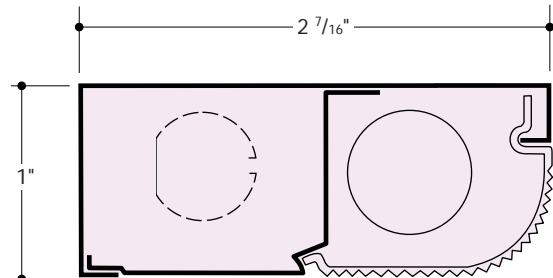
MOUNTING: All Mini-My-T-Lite™ fluorescents can be mounted individually or in continuous rows, knockouts provided at both ends for feed-thru and entry.

ELECTRICAL: Wired with "HES", high performance start hybrid Class "P" thermally protected ballasts, or T5 rapid quick-start 460 MA for 14W, 21W, 28W and 460 MA to 300 MA for 24W, 39W, 54W T5HO Electronic High Power Factor, Class A sound rated, <10% THD (less than 10% Total Harmonic Distortion), FCC Listed for Type 1 for 118 volt 60 Hz operation. Other voltages and frequencies available. CONSULT FACTORY. All electrical components mounted on wiring channel for ease of installation and servicing.

SHIELDING: Lineal ribbed clear prismatic acrylic wrap around plastic standard, destaticized and flexible, easily snaps in and out for relamping.

FINISH: All steel components parts are completely protected against rust and discoloration by an Anchoring Process and coated with 365° high quality sprayed baked white synthetic enamel for maximum durability, providing a high reflective efficiency.

CERTIFICATION: The Series 311 is U.L. and C.U.L. listed and bears the label of the I.B.E.W./AFL-CIO Local #3.



MINI MY-T-LITE is a trademark of LEGION LIGHTING CO., INC.
LEGION® is a registered trademark of LEGION LIGHTING CO., INC.

0800

Section C-Page 99

ORDERING DATA

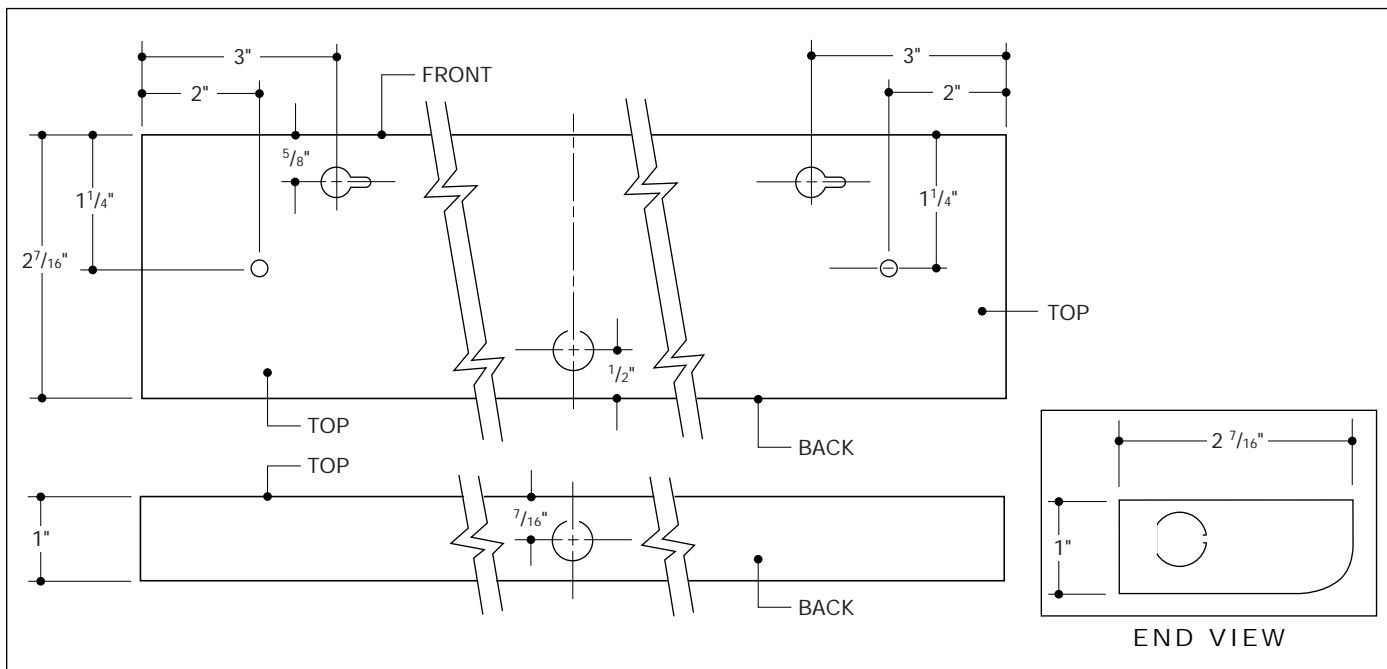
	Catalog No.	No. and Type Lamps	Length	Weight
STANDARD T5	311-8-ACP HES	1-F8T5-PH	12 ¹ / ₄ "	3 ¹ / ₂
	311-13-ACP HES	1-F13T5-PH	21 ¹ / ₄ "	4 ¹ / ₂
	311-28-ACP HES	2-F8T5-PH	24 ¹ / ₂ "	7 ¹ / ₂
	311-8/13-ACP HES	1-F8T5-PH/1-F13T5-PH	33 ¹ / ₂ "	8 ¹ / ₂
	311-213-ACP HES	2-F13T5	42 ¹ / ₂ "	9 ¹ / ₂
PENTRON T5	311-114-ACP	1-F14T5	22 ⁷ / ₁₆ "	2
	311-124HO-ACP	1-F24HOT5		
	311-121-ACP	1-F21T5	34 ⁷ / ₁₆ "	3
	311-139HO-ACP	1-F39HOT5		
	311-128-ACP	1-F28T5	46 ⁷ / ₃₂ "	4
	311-154HO-ACP	1-F54HOT5		

Pentron is a trademark of OSRAM SYLVANIA

OPTIONS

Suffix "RSW" after catalog no. for Positive Position Rocker Switch.
 Suffix "GCO" after catalog no. for Grounded Convenience Outlet.
 Suffix "CP" after catalog no. for 6 ft. cord and plug.
 Suffix "GCC" after catalog no. ³/₈" greenfield/conduit connector.
 Suffix "FB" after catalog no. for Fuse and Fuseholder

BACK PLANS



Information supplied primarily for illustrative purposes, subject to change.
 Consult factory for verification and minimum quantity orders.