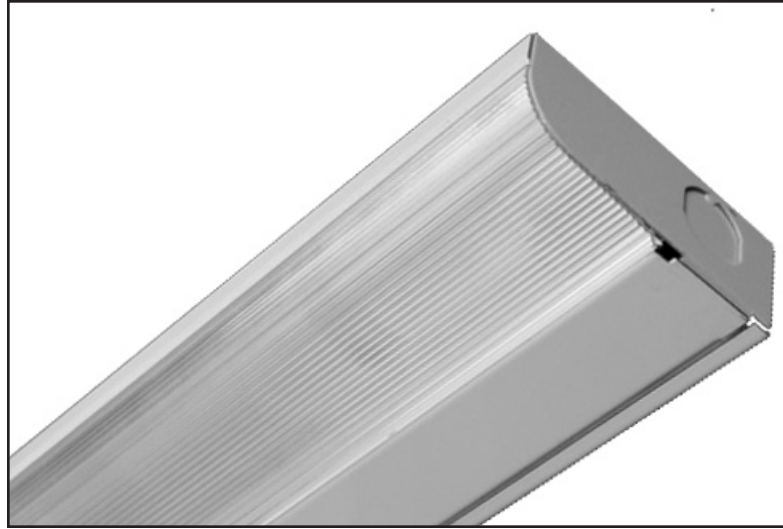


## APPLICATIONS

Legion's shallow MINI-MY-T-LITE™ Series 211 utilizes the new energy efficient high-lumen output T2 lamps. A high quality, ultra thin and narrow profile specification grade fluorescent luminaire formed of heavy gauge steel, with concealed ballast mounting screws. The low key silhouette design fits virtually anywhere, blending unobtrusively with any decor.

The choice of designers, and specifiers for homes, schools, banks, offices, hospitals etc.

Available in various sizes and wattages. Easily installed and maintained.



## SPECIFICATIONS

**CONSTRUCTION:** Die formed of heavy gauge steel, rigidly fabricated to insure true and perfect alignment.

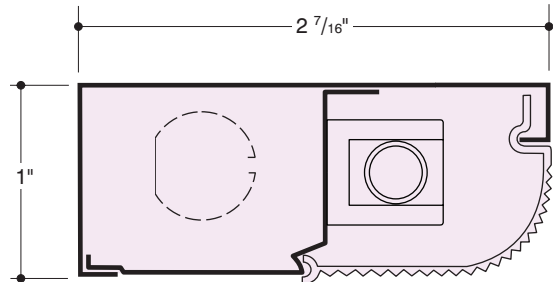
**MOUNTING:** All Mini-My-T-Lite™ fluorescents can be mounted individually or in continuous rows, knockouts provided at both ends for feed-thru and entry.

**ELECTRICAL:** 1 and 2 lamp 6, 8, 10 or 13 watt Solid State Electronic, Instant Start High Power Factor, Class "P", sound rated A, 120/277 volt 60Hz, -20° start temperature, Type 1 Outdoors, U.L. and C.U.L. listed. All electrical components mounted on wiring channel for ease of installation and servicing.

**SHIELDING:** Lineal ribbed clear prismatic acrylic wrap around plastic standard, destaticized and flexible, easily snaps in and out for relamping.

**FINISH:** All steel components parts are completely protected against rust and discoloration by an Anchoring Process and coated with 365° high quality sprayed baked white synthetic enamel for maximum durability, providing a high reflective efficiency.

**CERTIFICATION:** The Series 211 is U.L. and C.U.L. listed and bears the label of the I.B.E.W./AFL-CIO Local #3.



MINI MY-T-LITE is a trademark of LEGION LIGHTING CO., INC.  
LEGION® is a registered trademark of LEGION LIGHTING CO., INC.

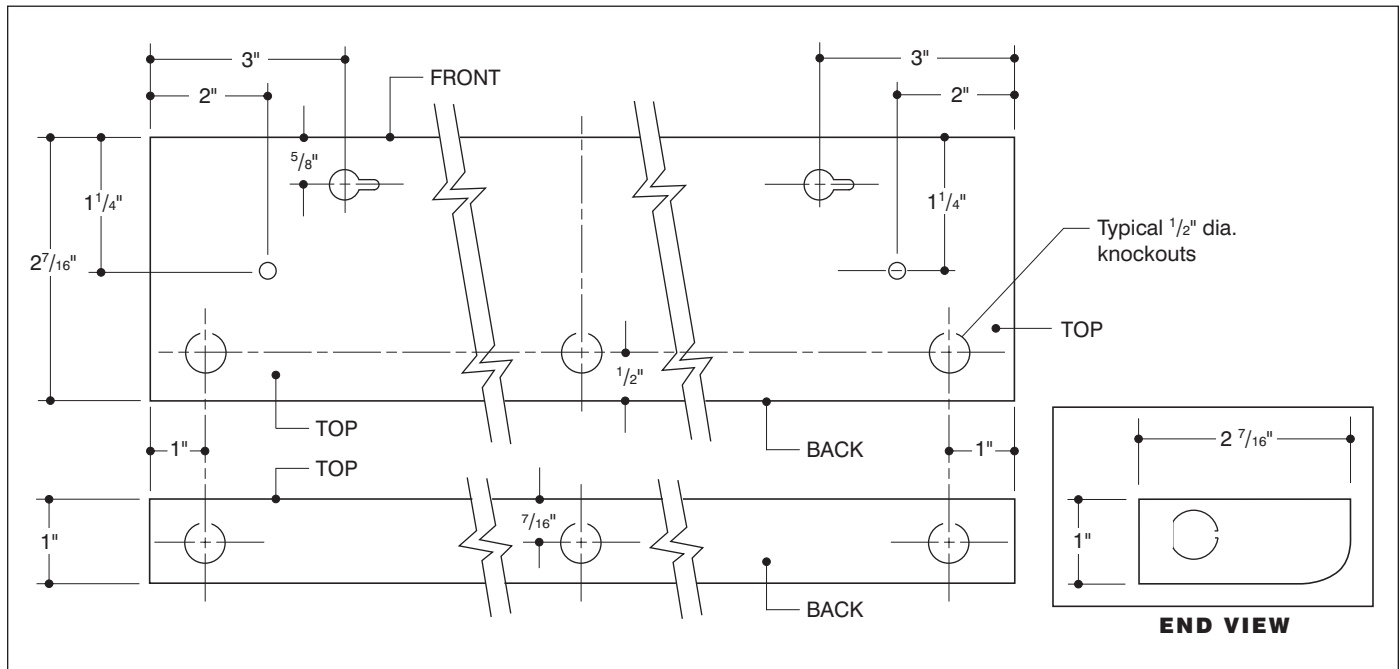
**ORDERING DATA**

Catalog No.	No. and Type Lamps	Length	Weight
211-6	1-6W-T2	9"	1
211-8	1-8W-T2	13"	1 1/2
211-11	1-11W-T2	17"	2
211-13	1-13W-T2	21"	2 1/2
211-28	2-8W-T2	25 <sup>27/32"</sup>	3
211-8/11	1-8W & 1-11W-T2	29 <sup>27/32"</sup>	3
211-211	2-11W-T2	33 <sup>27/32"</sup>	3 1/2
211-11/13	1-11W & 1-13W-T2	37 <sup>27/32"</sup>	4 1/2
211-213	2-13W-T2	41 <sup>27/32"</sup>	5

**OPTIONS**

Suffix "RSW" after catalog no. for Positive Position Rocker Switch.  
 Suffix "CP" after catalog no. for 6 ft. cord and plug.  
 Suffix "GCC" after catalog no. <sup>3/8"</sup> greenfield/conduit connector.  
 Suffix "FB" after catalog no. for Fuse and Fuseholder

**BACK PLANS**



Information supplied primarily for illustrative purposes, subject to change.  
 Consult factory for verification and minimum quantity orders.